

For Research Use Only

ATL3 Polyclonal antibody

Catalog Number: 16921-1-AP

Featured Product

11 Publications



Basic Information

Catalog Number:

16921-1-AP

Size:

150ul, Concentration: 450 µg/ml by Nanodrop;

Source:

Rabbit

Isotype:

IgG

Immunogen Catalog Number:

AG10279

GenBank Accession Number:

BC077727

GeneID (NCBI):

25923

UNIPROT ID:

Q6DD88

Full Name:

atlastin GTPase 3

Calculated MW:

541 aa, 61 kDa

Observed MW:

61 kDa

Purification Method:

Antigen affinity purification

Recommended Dilutions:

WB 1:2000-1:12000

IP 0.5-4.0 µg for 1.0-3.0 mg of total protein lysate

IF 1:50-1:500

Applications

Tested Applications:

WB, IP, IF, ELISA

Cited Applications:

WB, IP, IF, CoIP

Species Specificity:

human, mouse, rat

Cited Species:

human, mouse, monkey

Positive Controls:

WB: HEK-293T cells, HeLa cells, mouse liver tissue, HEK-293 cells, HepG2 cells, SMMC-7721 cells, Jurkat cells, NIH/3T3 cells, rat liver tissue

IP: HeLa cells,

IF: HeLa cells, HepG2 cells

Background Information

ATL3, belonging to a class of dynamin-like GTPase, was reported to mediate ER fusion. ATL3 is required for the proper formation of the network of interconnected tubules of the endoplasmic reticulum. ATL3 functions as a receptor for ER-phagy, promoting tubular ER degradation upon starvation. Mutations in this gene may be associated with hereditary sensory neuropathy type IF.

Notable Publications

Author	Pubmed ID	Journal	Application
Pengli Zheng	30030520	Cell Res	WB
Qingzhou Chen	30773365	Curr Biol	CoIP, WB
Pengli Zheng	34912111	Nature	WB, IP

Storage

Storage:

Store at -20°C. Stable for one year after shipment.

Storage Buffer:

PBS with 0.02% sodium azide and 50% glycerol pH 7.3.

Aliquoting is unnecessary for -20°C storage

*** 20ul sizes contain 0.1% BSA

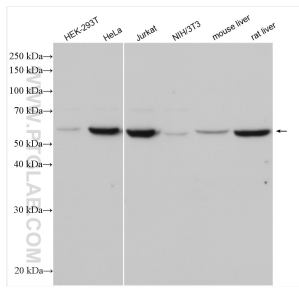
For technical support and original validation data for this product please contact:

T: 1 (888) 4PTGLAB (1-888-478-4522) (toll free in USA), or 1(312) 455-8498 (outside USA)

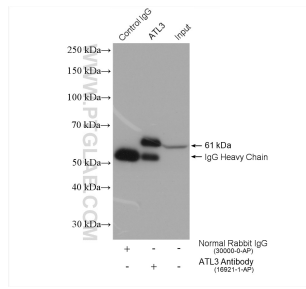
E: proteintech@ptglab.com
W: ptglab.com

This product is exclusively available under Proteintech Group brand and is not available to purchase from any other manufacturer.

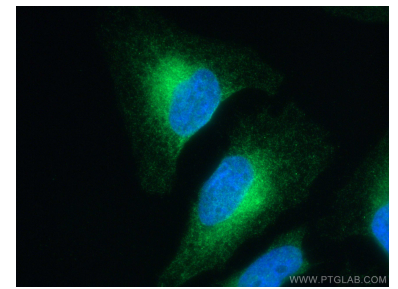
Selected Validation Data



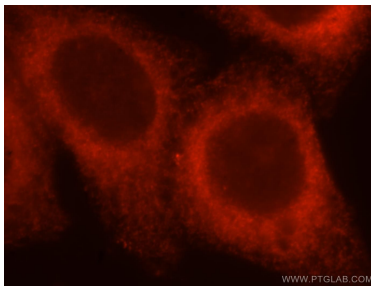
Various lysates were subjected to SDS PAGE followed by western blot with 16921-1-AP (ATL3 antibody) at dilution of 1:6000 incubated at room temperature for 1.5 hours.



IP result of anti-ATL3 (IP:16921-1-AP, 4 μ g; Detection:16921-1-AP 1:5000) with HeLa cells lysate 1720 μ g.



Immunofluorescent analysis of (4% PFA) fixed HeLa cells using ATL3 antibody (16921-1-AP) at dilution of 1:200 and CoraLite[®]488-Conjugated AffiniPure Goat Anti-Rabbit IgG(H+L).



Immunofluorescent analysis of HepG2 cells, using ATL3 antibody 16921-1-AP at 1:25 dilution and Rhodamine-labeled goat anti-rabbit IgG (red).