

For Research Use Only

RBM26 Polyclonal antibody

Catalog Number: 16823-1-AP



Basic Information

Catalog Number: 16823-1-AP	GenBank Accession Number: BC000791	Purification Method: Antigen affinity purification
Size: 150ul , Concentration: 350 µg/ml by Nanodrop and 240 µg/ml by Bradford method using BSA as the standard;	GeneID (NCBI): 64062	Recommended Dilutions: WB 1:2000-1:12000 IP 0.5-4.0 ug for IP and 1:2000-1:10000 for WB
Source: Rabbit	Full Name: RNA binding motif protein 26	IHC 1:20-1:200
Isotype: IgG	Calculated MW: 983 aa, 111 kDa	IF 1:20-1:200
Immunogen Catalog Number: AG10398	Observed MW: 125 kDa	

Applications

Tested Applications: IF, IHC, IP, WB, ELISA	Positive Controls: WB : HEK-293 cells, HeLa cells, Jurkat cells
Species Specificity: human, mouse, rat	IP : HEK-293 cells,
Note-IHC: suggested antigen retrieval with TE buffer pH 9.0; (*) Alternatively, antigen retrieval may be performed with citrate buffer pH 6.0	IHC : human brain tissue,
	IF : HepG2 cells,

Background Information

Storage

Storage:
Store at -20°C. Stable for one year after shipment.
Storage Buffer:
PBS with 0.02% sodium azide and 50% glycerol pH 7.3.
Aliquoting is unnecessary for -20°C storage

*** 20ul sizes contain 0.1% BSA

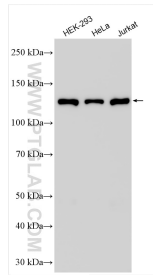
For technical support and original validation data for this product please contact:

T: 1 (888) 4PTGLAB (1-888-478-4522) (toll free in USA), or 1(312) 455-8498 (outside USA)

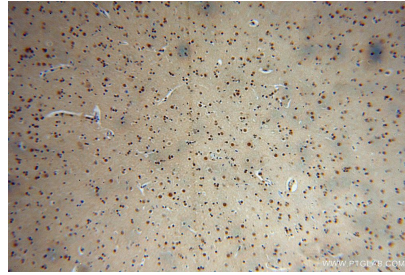
E: proteintech@ptglab.com
W: ptglab.com

This product is exclusively available under Proteintech Group brand and is not available to purchase from any other manufacturer.

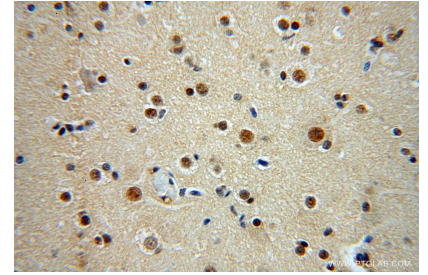
Selected Validation Data



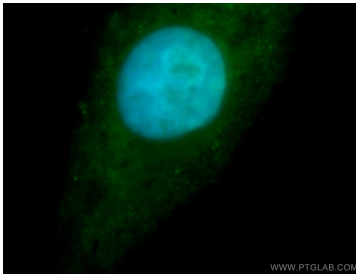
Various lysates were subjected to SDS PAGE followed by western blot with 16823-1-AP (RBM26 antibody) at dilution of 1:6000 incubated at room temperature for 1.5 hours.



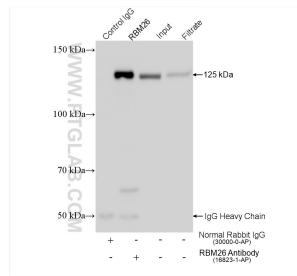
Immunohistochemical analysis of paraffin-embedded human brain using 16823-1-AP (RBM26 antibody) at dilution of 1:100 (under 10x lens).



Immunohistochemical analysis of paraffin-embedded human brain using 16823-1-AP (RBM26 antibody) at dilution of 1:100 (under 40x lens).



Immunofluorescent analysis of HepG2 cells, using RBM26 antibody 16823-1-AP at 1:100 dilution and FITC-labeled donkey anti-rabbit IgG (green). Blue pseudocolor = DAPI (fluorescent DNA dye).



IP result of anti-RBM26(IP:16823-1-AP, 4ug; Detection:16823-1-AP 1:5000) with HEK-293 cells lysate 1400 ug.