

For Research Use Only

# GSTM4 Polyclonal antibody

Catalog Number: 16766-1-AP **4 Publications**



## Basic Information

<b>Catalog Number:</b> 16766-1-AP	<b>GenBank Accession Number:</b> BC015513	<b>Purification Method:</b> Antigen affinity purification
<b>Size:</b> 150ul, Concentration: 300 µg/ml by Nanodrop and 167 µg/ml by Bradford method using BSA as the standard;	<b>GeneID (NCBI):</b> 2948	<b>Recommended Dilutions:</b> WB 1:500-1:2400 IP 0.5-4.0 ug for IP and 1:500-1:1000 for WB
<b>Source:</b> Rabbit	<b>Full Name:</b> glutathione S-transferase mu 4	<b>IHC 1:50-1:500</b>
<b>Isotype:</b> IgG	<b>Calculated MW:</b> 218 aa, 26 kDa	<b>IF 1:50-1:500</b>
<b>Immunogen Catalog Number:</b> AG10340	<b>Observed MW:</b> 26 kDa	

## Applications

<b>Tested Applications:</b> IF, IHC, IP, WB, ELISA	<b>Positive Controls:</b> WB: mouse liver tissue, HeLa cells, mouse lung tissue
<b>Cited Applications:</b> IHC, WB	<b>IP:</b> mouse lung tissue,
<b>Species Specificity:</b> human, mouse, rat	<b>IHC:</b> human cervical cancer tissue,
<b>Cited Species:</b> human, mouse	<b>IF:</b> HepG2 cells,

**Note-IHC: suggested antigen retrieval with TE buffer pH 9.0; (\*) Alternatively, antigen retrieval may be performed with citrate buffer pH 6.0**

## Background Information

### Notable Publications

Author	Pubmed ID	Journal	Application
Rojanathammanee Lalida L	24285747	J Gerontol A Biol Sci Med Sci	WB
Lalida Rojanathammanee	25001375	Age (Dordr)	WB
Wei Liu	36928896	Reprod Sci	WB, IHC

## Storage

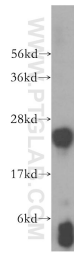
**Storage:**  
Store at -20°C. Stable for one year after shipment.  
**Storage Buffer:**  
PBS with 0.02% sodium azide and 50% glycerol pH 7.3.  
Aliquoting is unnecessary for -20°C storage

\*\*\* 20ul sizes contain 0.1% BSA

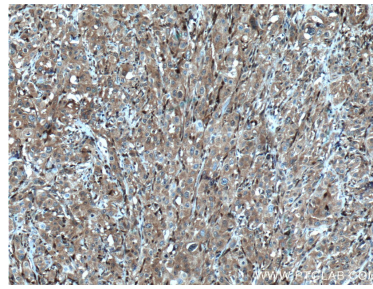
For technical support and original validation data for this product please contact:  
T: 1 (888) 4PTGLAB (1-888-478-4522) (toll free in USA), or 1(312) 455-8498 (outside USA)  
E: proteintech@ptglab.com  
W: ptglab.com

This product is exclusively available under Proteintech Group brand and is not available to purchase from any other manufacturer.

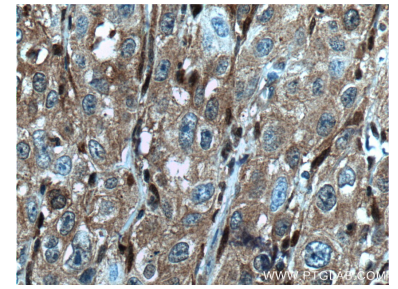
## Selected Validation Data



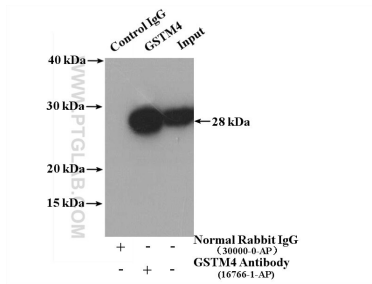
mouse liver tissue were subjected to SDS PAGE followed by western blot with 16766-1-AP (GSTM4 antibody) at dilution of 1:500 incubated at room temperature for 1.5 hours.



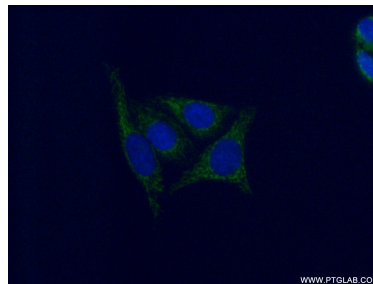
Immunohistochemical analysis of paraffin-embedded human cervical cancer tissue slide using 16766-1-AP (GSTM4 antibody) at dilution of 1:100 (under 10x lens. Heat mediated antigen retrieval with Tris-EDTA buffer (pH 9.0).



Immunohistochemical analysis of paraffin-embedded human cervical cancer tissue slide using 16766-1-AP (GSTM4 antibody) at dilution of 1:100 (under 40x lens. Heat mediated antigen retrieval with Tris-EDTA buffer (pH 9.0).



IP result of anti-GSTM4 (IP:16766-1-AP, 4ug; Detection:16766-1-AP 1:500) with mouse lung tissue lysate 4000 ug.



Immunofluorescent analysis of (-20°C Ethanol) fixed HepG2 cells using 16766-1-AP (GSTM4 antibody) at dilution of 1:50 and Alexa Fluor 488-conjugated AffiniPure Goat Anti-Rabbit IgG(H+L).