

For Research Use Only

# MRPS16 Polyclonal antibody

Catalog Number: 16735-1-AP **18 Publications**



## Basic Information

<b>Catalog Number:</b> 16735-1-AP	<b>GenBank Accession Number:</b> BC021106	<b>Purification Method:</b> Antigen affinity purification
<b>Size:</b> 150ul , Concentration: 400 µg/ml by Nanodrop and 200 µg/ml by Bradford method using BSA as the standard;	<b>GeneID (NCBI):</b> 51021	<b>Recommended Dilutions:</b> WB 1:500-1:2000 IP 0.5-4.0 ug for IP and 1:500-1:1000 for WB
<b>Source:</b> Rabbit	<b>Full Name:</b> mitochondrial ribosomal protein S16	<b>Calculated MW:</b> 137 aa, 15 kDa
<b>Isotype:</b> IgG	<b>Observed MW:</b> 15 kDa	<b>Immunogen Catalog Number:</b> AG9749

## Applications

<b>Tested Applications:</b> IF, IP, WB, ELISA	<b>Positive Controls:</b> WB : HEK-293 cells, Jurkat cells, HeLa cells, HepG2 cells, mouse liver tissue, rat liver tissue
<b>Cited Applications:</b> WB	<b>IP :</b> HEK-293 cells,
<b>Species Specificity:</b> human, mouse, rat	<b>IF :</b> HepG2 cells,
<b>Cited Species:</b> human, mouse	

## Background Information

### Notable Publications

Author	Pubmed ID	Journal	Application
Ying Shu	36314841	EMBO J	WB
Nicola Ferreira	31721250	EMBO J	WB
Richard G Lee	32576663	J Cell Sci	WB

## Storage

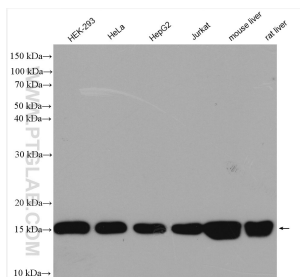
**Storage:**  
Store at -20°C. Stable for one year after shipment.  
**Storage Buffer:**  
PBS with 0.02% sodium azide and 50% glycerol pH 7.3.  
Aliquoting is unnecessary for -20°C storage

\*\*\* 20ul sizes contain 0.1% BSA

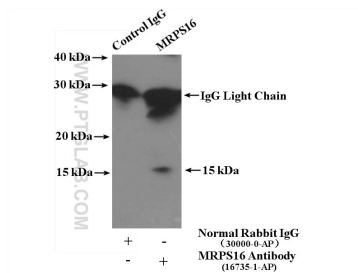
For technical support and original validation data for this product please contact:  
T: 1 (888) 4PTGLAB (1-888-478-4522) (toll free in USA), or 1(312) 455-8498 (outside USA)  
E: proteintech@ptglab.com  
W: ptglab.com

This product is exclusively available under Proteintech Group brand and is not available to purchase from any other manufacturer.

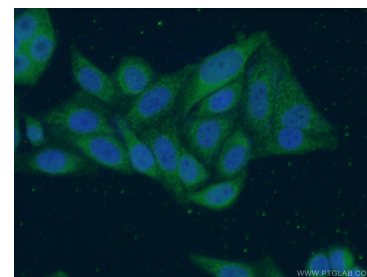
## Selected Validation Data



Various lysates were subjected to SDS PAGE followed by western blot with 16735-1-AP (MRPS16 antibody) at dilution of 1:1000 incubated at room temperature for 1.5 hours.



IP Result of anti-MRPS16 (IP:16735-1-AP, 4ug; Detection:16735-1-AP 1:500) with HEK-293 cells lysate 1480ug.



Immunofluorescent analysis of (4% PFA) fixed HepG2 cells using 16735-1-AP (MRPS16 antibody) at dilution of 1:50 and Alexa Fluor 488-conjugated AffiniPure Goat Anti-Rabbit IgG(H+L).