

For Research Use Only

HPSE Polyclonal antibody

Catalog Number: 16673-1-AP **2 Publications**



Basic Information

Catalog Number: 16673-1-AP	GenBank Accession Number: BC051321	Purification Method: Antigen affinity purification
Size: 150ul , Concentration: 300 µg/ml by Nanodrop and 207 µg/ml by Bradford method using BSA as the standard;	GeneID (NCBI): 10855	Recommended Dilutions: WB 1:200-1:1000 IHC 1:20-1:200
Source: Rabbit	Full Name: heparanase	
Isotype: IgG	Calculated MW: 543 aa, 61 kDa	
Immunogen Catalog Number: AG10167	Observed MW: 65 kDa, 50 kDa	

Applications

Tested Applications: IHC, WB, ELISA	Positive Controls: WB : DU 145 cells, IHC : human liver cancer tissue, human placenta tissue, mouse kidney tissue
Cited Applications: IF, WB	
Species Specificity: human, mouse, rat	
Cited Species: human, mouse	

Note-IHC: suggested antigen retrieval with TE buffer pH 9.0; (*) Alternatively, antigen retrieval may be performed with citrate buffer pH 6.0

Background Information

HPSE(Heparanase) is also named as HEP, HPA, HPA1, HPR1, HPSE1, HSE1 and belongs to the glycosyl hydrolase 79 family. It is a endoglycosidase that cleaves heparan sulfate proteoglycans (HSPGs) into heparan sulfate side chains and core proteoglycans. HPSE is essential in the disassembly of the extracellular matrix (ECM) by invading cells. It has 3 isoforms produced by alternative splicing with the molecular weight of 61 kDa, 55 kDa and 53 kDa. The full length protein has six glycosylation sites. The cleavage of the 65 kDa form leads to the generation of a linker peptide, and 8 kDa and 50 kDa products. The active form, the 8/50 kDa heterodimer, is resistant to degradation and glycosylation of the 50 kDa subunit appears to be essential for its solubility.

Notable Publications

Author	Pubmed ID	Journal	Application
Guang Xu	28081450	Diabetes Res Clin Pract	WB
Alex M Agelidis	28700944	Cell Rep	WB,IF

Storage

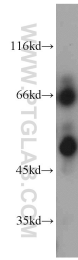
Storage:
Store at -20°C. Stable for one year after shipment.
Storage Buffer:
PBS with 0.02% sodium azide and 50% glycerol pH 7.3.
Aliquoting is unnecessary for -20°C storage

***** 20ul sizes contain 0.1% BSA**

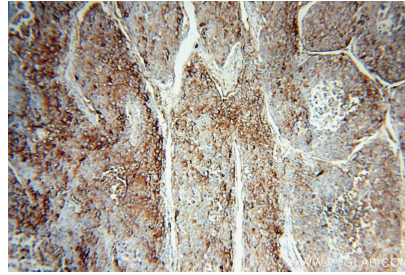
For technical support and original validation data for this product please contact:
T: 1 (888) 4PTGLAB (1-888-478-4522) (toll free in USA), or 1(312) 455-8498 (outside USA)
E: proteintech@ptglab.com
W: ptglab.com

This product is exclusively available under Proteintech Group brand and is not available to purchase from any other manufacturer.

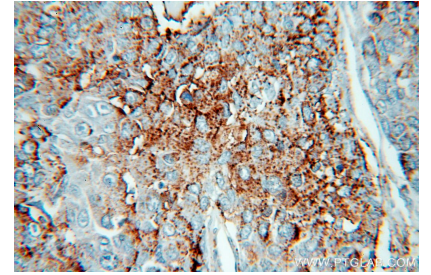
Selected Validation Data



DU 145 cells were subjected to SDS PAGE followed by western blot with 16673-1-AP (HPSE antibody) at dilution of 1:300 incubated at room temperature for 1.5 hours.



Immunohistochemical analysis of paraffin-embedded human liver cancer using 16673-1-AP (HPSE antibody) at dilution of 1:50 (under 10x lens).



Immunohistochemical analysis of paraffin-embedded human liver cancer using 16673-1-AP (HPSE antibody) at dilution of 1:50 (under 40x lens).