

For Research Use Only

PRPS1L1 Polyclonal antibody

Catalog Number: 16657-1-AP



Basic Information

Catalog Number: 16657-1-AP	GenBank Accession Number: BC062797	Purification Method: Antigen affinity purification
Size: 150ul , Concentration: 400 µg/ml by Nanodrop;	GeneID (NCBI): 221823	Recommended Dilutions: WB 1:500-1:2000
Source: Rabbit	Full Name: phosphoribosyl pyrophosphate synthetase 1-like 1	
Isotype: IgG	Calculated MW: 318 aa, 35 kDa	
Immunogen Catalog Number: AG10111	Observed MW: 35 kDa	

Applications

Tested Applications: WB, ELISA	Positive Controls: WB : human testis tissue, NIH/3T3 cells, mouse testis tissue
Species Specificity: human, mouse	

Background Information

Storage

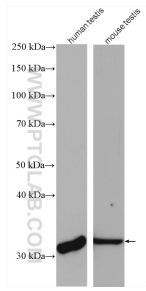
Storage:
Store at -20°C. Stable for one year after shipment.
Storage Buffer:
PBS with 0.02% sodium azide and 50% glycerol pH 7.3.
Aliquoting is unnecessary for -20°C storage

*** 20ul sizes contain 0.1% BSA

For technical support and original validation data for this product please contact:
T: 1 (888) 4PTGLAB (1-888-478-4522) (toll free in USA), or 1(312) 455-8498 (outside USA) E: proteintech@ptglab.com
W: ptglab.com

This product is exclusively available under Proteintech Group brand and is not available to purchase from any other manufacturer.

Selected Validation Data



Various lysates were subjected to SDS PAGE followed by western blot with 16657-1-AP (PRPS1L1 antibody) at dilution of 1:1000 incubated at room temperature for 1.5 hours.