

For Research Use Only

EPLIN Polyclonal antibody

Catalog Number: 16639-1-AP

Featured Product

4 Publications



Basic Information

Catalog Number:
16639-1-AP

Size:
150ul, Concentration: 200 µg/ml by Nanodrop and 200 µg/ml by Bradford method using BSA as the standard;

Source:
Rabbit

Isotype:
IgG

Immunogen Catalog Number:
AG9994

GenBank Accession Number:
BC001247

GeneID (NCBI):
51474

Full Name:
LIM domain and actin binding 1

Calculated MW:
85 kDa

Observed MW:
90 kDa, 110 kDa

Purification Method:
Antigen affinity purification

Recommended Dilutions:
WB 1:5000-1:50000
IP 0.5-4.0 ug for IP and 1:500-1:1000 for WB
IHC 1:50-1:500
IF 1:10-1:100

Applications

Tested Applications:
IF, IHC, IP, WB, ELISA

Cited Applications:
IF, IHC, WB

Species Specificity:
human, mouse, rat

Cited Species:
human, mouse

Note-IHC: suggested antigen retrieval with TE buffer pH 9.0; (*) Alternatively, antigen retrieval may be performed with citrate buffer pH 6.0

Positive Controls:

WB: HUVEC cells, HEK-293 cells, human placenta tissue

IP: mouse liver tissue,

IHC: human prostate cancer tissue, human pancreas cancer tissue

IF: HepG2 cells,

Background Information

EPLIN is a cytoskeletal protein that is preferentially expressed in epithelial cells and is implicated in regulation of cytoskeletal dynamics and cytokinesis. In human, there are two known isoforms, EPLIN-a and -b, generated by alternative promoter usage from a single gene. EPLIN-a expression is often down-regulated in cancerous cells and tissues.

Notable Publications

Author	Pubmed ID	Journal	Application
Qianqian Yang	36434041	Exp Mol Med	WB
Erik S Linklater	33999101	J Cell Biol	IHC
Shihoko Miyazaki	35821749	Acta Histochem Cytochem	IF

Storage

Storage:

Store at -20°C. Stable for one year after shipment.

Storage Buffer:

PBS with 0.02% sodium azide and 50% glycerol pH 7.3.

Aliquoting is unnecessary for -20°C storage

*** 20ul sizes contain 0.1% BSA

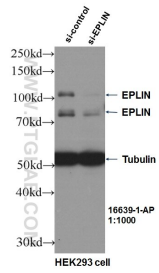
For technical support and original validation data for this product please contact:

T: 1 (888) 4PTGLAB (1-888-478-4522) (toll free in USA), or 1(312) 455-8498 (outside USA)

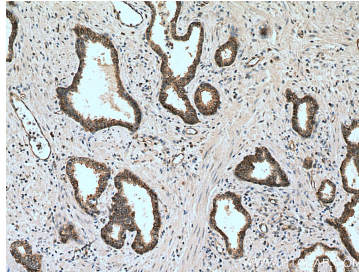
E: proteintech@ptglab.com
W: ptglab.com

This product is exclusively available under Proteintech Group brand and is not available to purchase from any other manufacturer.

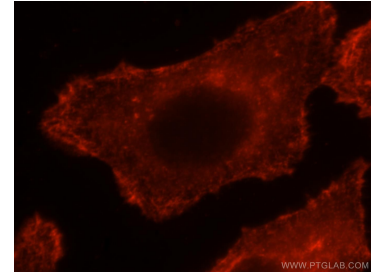
Selected Validation Data



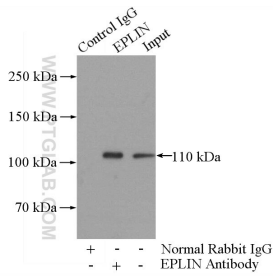
WB result of EPLIN antibody (16639-1-AP, 1:1000) with si-Control and si-EPLIN transfected HEK293 cells.



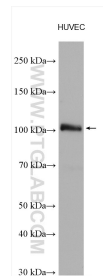
Immunohistochemical analysis of paraffin-embedded human prostate cancer tissue slide using 16639-1-AP (EPLIN antibody) at dilution of 1:200 (under 10x lens). Heat mediated antigen retrieval with Tris-EDTA buffer (pH 9.0).



Immunofluorescent analysis of HepG2 cells, using LIMA1 antibody 16639-1-AP at 1:25 dilution and Rhodamine-labeled goat anti-rabbit IgG (red).



IP Result of anti-EPLIN (IP:16639-1-AP, 4ug; Detection:16639-1-AP 1:500) with mouse liver tissue lysate 4000ug.



HUVEC cells were subjected to SDS PAGE followed by western blot with 16639-1-AP (EPLIN antibody) at dilution of 1:10000 incubated at room temperature for 1.5 hours.