

For Research Use Only

MCM8 Polyclonal antibody

Catalog Number: 16451-1-AP **6 Publications**



Basic Information

Catalog Number: 16451-1-AP	GenBank Accession Number: BC008830	Purification Method: Antigen affinity purification
Size: 150ul, Concentration: 550 µg/ml by Nanodrop and 220 µg/ml by Bradford method using BSA as the standard;	GeneID (NCBI): 84515	Recommended Dilutions: WB 1:1000-1:5000 IP 0.5-4.0 ug for IP and 1:200-1:1000 for WB
Source: Rabbit	Full Name: minichromosome maintenance complex component 8	
Isotype: IgG	Calculated MW: 880 aa, 98 kDa	
Immunogen Catalog Number: AG8696	Observed MW: 95 kDa	

Applications

Tested Applications: IP, WB, ELISA	Positive Controls: WB : HEK-293T cells, NIH/3T3 cells
Cited Applications: CoIP, IF, WB	IP : NIH/3T3 cells,
Species Specificity: human, mouse, rat	
Cited Species: human	

Background Information

MCM8, also named as Minichromosome maintenance 8, is a 840 amino acid protein, which belongs to the MCM family. MCM8 is expressed highly in placenta, lung and pancreas and various tumors with highest levels in colon and lung cancers. MCM8 is a component of the MCM8-MCM9 complex, which involved in homologous recombination repair following DNA interstrand cross-links and plays a key role during gametogenesis. MCM8 exists some isoforms with MV 94 kDa and 70 kDa.

Notable Publications

Author	Pubmed ID	Journal	Application
Anna Klucnika	36355348	J Cell Biol	WB,IF,CoIP
Jen-Wei Huang	32528060	Nat Commun	WB
Kang Liu	32647118	Cell Death Dis	WB

Storage

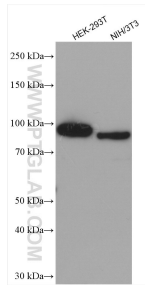
Storage:
Store at -20°C. Stable for one year after shipment.
Storage Buffer:
PBS with 0.02% sodium azide and 50% glycerol pH 7.3.
Aliquoting is unnecessary for -20°C storage

*** 20ul sizes contain 0.1% BSA

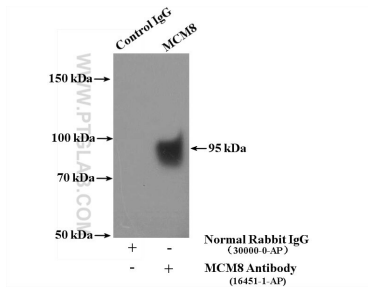
For technical support and original validation data for this product please contact:
T: 1 (888) 4PTGLAB (1-888-478-4522) (toll free in USA), or 1(312) 455-8498 (outside USA)
E: proteintech@ptglab.com
W: ptglab.com

This product is exclusively available under Proteintech Group brand and is not available to purchase from any other manufacturer.

Selected Validation Data



Various lysates were subjected to SDS PAGE followed by western blot with 16451-1-AP (MCM8 antibody) at dilution of 1:2500 incubated at room temperature for 1.5 hours.



IP Result of anti-MCM8 (IP:16451-1-AP, 4ug; Detection:16451-1-AP 1:300) with NIH/3T3 cells lysate 4000ug.