

For Research Use Only

MRPS5 Polyclonal antibody

Catalog Number: 16428-1-AP

Featured Product

1 Publications



Basic Information

Catalog Number: 16428-1-AP	GenBank Accession Number: BC014172	Purification Method: Antigen affinity purification
Size: 150ul, Concentration: 400 µg/ml by Nanodrop and 240 µg/ml by Bradford method using BSA as the standard;	GeneID (NCBI): 64969	Recommended Dilutions: WB 1:500-1:3000 IHC 1:50-1:500
Source: Rabbit	Full Name: mitochondrial ribosomal protein S5	
Isotype: IgG	Calculated MW: 430 aa, 48 kDa	
Immunogen Catalog Number: AG9672	Observed MW: 38-42 kDa	

Applications

Tested Applications: IHC, WB, ELISA	Positive Controls: WB : HEK-293 cells, HeLa cells, HepG2 cells, Jurkat cells IHC : human kidney tissue,
Cited Applications: IHC	
Species Specificity: human	
Cited Species: human	
Note-IHC: suggested antigen retrieval with TE buffer pH 9.0; (*) Alternatively, antigen retrieval may be performed with citrate buffer pH 6.0	

Background Information

Notable Publications

Author	Pubmed ID	Journal	Application
Yiwen Liu	36989676	Transl Oncol	IHC

Storage

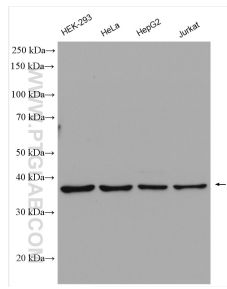
Storage:
Store at -20°C. Stable for one year after shipment.
Storage Buffer:
PBS with 0.02% sodium azide and 50% glycerol pH 7.3.
Aliquoting is unnecessary for -20°C storage

*** 20ul sizes contain 0.1% BSA

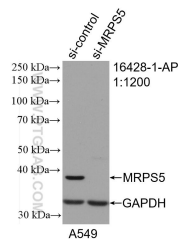
For technical support and original validation data for this product please contact:
T: 1 (888) 4PTGLAB (1-888-478-4522) (toll free in USA), or 1(312) 455-8498 (outside USA)
E: proteintech@ptglab.com
W: ptglab.com

This product is exclusively available under Proteintech Group brand and is not available to purchase from any other manufacturer.

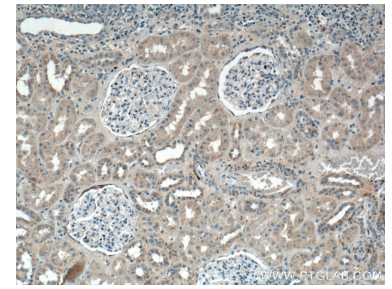
Selected Validation Data



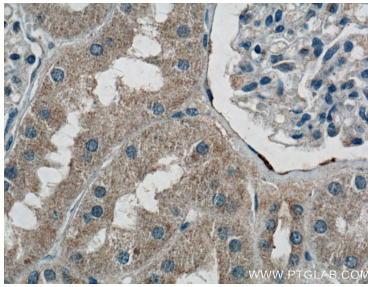
HEK-293 cells were subjected to SDS PAGE followed by western blot with 16428-1-AP (MRPS5 antibody) at dilution of 1:1500 incubated at room temperature for 1.5 hours.



WB result of MRPS5 antibody (16428-1-AP; 1:1200; incubated at room temperature for 1.5 hours) with sh-Control and sh-MRPS5 transfected HeLa cells.



Immunohistochemical analysis of paraffin-embedded human kidney tissue slide using 16428-1-AP (MRPS5 antibody) at dilution of 1:200 (under 10x lens).



Immunohistochemical analysis of paraffin-embedded human kidney tissue slide using 16428-1-AP (MRPS5 antibody) at dilution of 1:200 (under 40x lens).