

For Research Use Only

PSG11 Polyclonal antibody

Catalog Number: 16352-1-AP



Basic Information

Catalog Number: 16352-1-AP	GenBank Accession Number: BC020711	Purification Method: Antigen affinity purification
Size: 150ul , Concentration: 187 µg/ml by Nanodrop and 187 µg/ml by Bradford method using BSA as the standard;	GeneID (NCBI): 5680	Recommended Dilutions: WB 1:500-1:3000 IHC 1:20-1:200 IF 1:50-1:500
Source: Rabbit	Full Name: pregnancy specific beta-1-glycoprotein 11	
Isotype: IgG	Calculated MW: 219 aa, 24 kDa	
Immunogen Catalog Number: AG9562	Observed MW: 24 kDa	

Applications

Tested Applications: IF, IHC, WB, ELISA	Positive Controls:
Species Specificity: human, mouse	WB : mouse uterus tissue, HeLa cells
Note-IHC: suggested antigen retrieval with TE buffer pH 9.0; (*) Alternatively, antigen retrieval may be performed with citrate buffer pH 6.0	IHC : human brain tissue, human kidney tissue, human liver tissue, human lung tissue, human placenta tissue, human testis tissue
	IF : HeLa cells,

Background Information

PSG11, also named as PSG13, PSG14, PSBG-11 and PSBG-13, belongs to the immunoglobulin superfamily and CEA family. PSBG are produced in high quantity during pregnancy. PSG11 and other PSGs induce dose-dependent secretion of anti-inflammatory cytokines by human monocytes. (PMID:11327547)

Storage

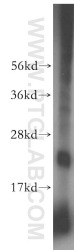
Storage:
Store at -20°C. Stable for one year after shipment.
Storage Buffer:
PBS with 0.02% sodium azide and 50% glycerol pH 7.3.
Aliquoting is unnecessary for -20°C storage

*** 20ul sizes contain 0.1% BSA

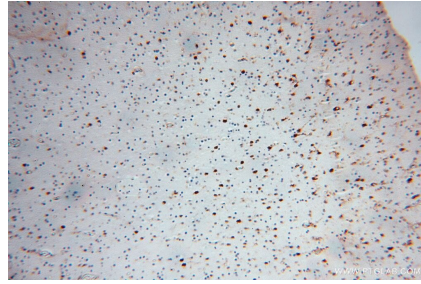
For technical support and original validation data for this product please contact:
T: 1 (888) 4PTGLAB (1-888-478-4522) (toll free in USA), or 1(312) 455-8498 (outside USA)
E: proteintech@ptglab.com
W: ptglab.com

This product is exclusively available under Proteintech Group brand and is not available to purchase from any other manufacturer.

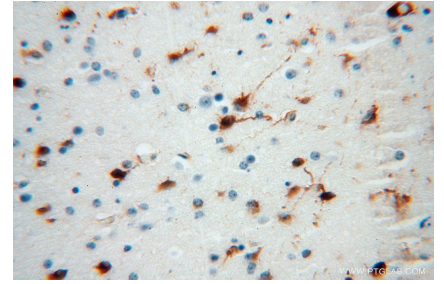
Selected Validation Data



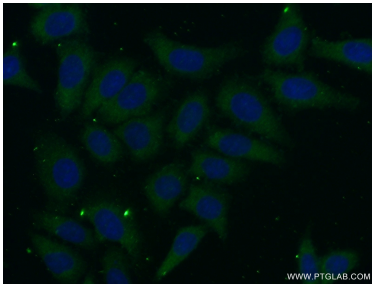
mouse uterus tissue were subjected to SDS PAGE followed by western blot with 16352-1-AP (PSG11 antibody) at dilution of 1:600 incubated at room temperature for 1.5 hours.



Immunohistochemical analysis of paraffin-embedded human brain using 16352-1-AP (PSG11 antibody) at dilution of 1:100 (under 10x lens).



Immunohistochemical analysis of paraffin-embedded human brain using 16352-1-AP (PSG11 antibody) at dilution of 1:100 (under 40x lens).



Immunofluorescent analysis of (-20°C Ethanol) fixed HeLa cells using 16352-1-AP (PSG11 antibody) at dilution of 1:50 and Alexa Fluor 488-conjugated AffiniPure Goat Anti-Rabbit IgG(H+L).