

For Research Use Only

CEP70 Polyclonal antibody

Catalog Number: 16280-1-AP **1 Publications**



Basic Information

Catalog Number: 16280-1-AP	GenBank Accession Number: BC016050	Purification Method: Antigen affinity purification
Size: 150ul , Concentration: 450 µg/ml by Nanodrop and 253 µg/ml by Bradford method using BSA as the standard;	GeneID (NCBI): 80321	Recommended Dilutions: WB 1:1000-1:4000 IF 1:50-1:500
Source: Rabbit	Full Name: centrosomal protein 70kDa	
Isotype: IgG	Calculated MW: 597 aa, 70 kDa	
Immunogen Catalog Number: AG9365	Observed MW: 25-28 kDa	

Applications

Tested Applications: IF, WB, ELISA	Positive Controls:
Cited Applications: IF	WB : human placenta tissue, mouse testis tissue, PC-3 cells
Species Specificity: human, mouse	IF : HepG2 cells,
Cited Species: human, mouse	

Background Information

CEP70, also named as Centrosomal protein of 70 kDa, is a 597 amino acid protein, which directly interacts with tubulin-gamma; this interaction determines centrosomal localization. CEP70 plays a role in the organization of both preexisting and nascent microtubules in interphase cells. During mitosis, CEP70 is required for the organization and orientation of the mitotic spindle. CEP70 exists some isoforms with MW 70, 67, 65 and 25 kDa.

Notable Publications

Author	Pubmed ID	Journal	Application
Tiechao Ruan	36967801	Front Endocrinol (Lausanne)	IF

Storage

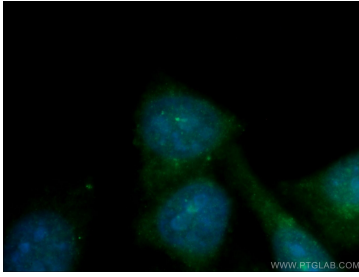
Storage:
Store at -20°C. Stable for one year after shipment.
Storage Buffer:
PBS with 0.02% sodium azide and 50% glycerol pH 7.3.
Aliquoting is unnecessary for -20°C storage

*** 20ul sizes contain 0.1% BSA

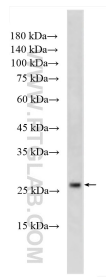
For technical support and original validation data for this product please contact:
T: 1 (888) 4PTGLAB (1-888-478-4522) (toll free in USA), or 1(312) 455-8498 (outside USA)
E: proteintech@ptglab.com
W: ptglab.com

This product is exclusively available under Proteintech Group brand and is not available to purchase from any other manufacturer.

Selected Validation Data



Immunofluorescent analysis of (-20°C Ethanol) fixed HepG2 cells using 16280-1-AP (CEP70 antibody) at dilution of 1:50 and Alexa Fluor 488-conjugated AffiniPure Goat Anti-Rabbit IgG(H+L).



human placenta tissue were subjected to SDS PAGE followed by western blot with 16280-1-AP (CEP70 antibody) at dilution of 1:2000 incubated at room temperature for 1.5 hours.