

For Research Use Only

CAP1 Polyclonal antibody

Catalog Number: 16231-1-AP

Featured Product

5 Publications



Basic Information

Catalog Number:

16231-1-AP

Size:

150ul, Concentration: 750 µg/ml by Nanodrop;

Source:

Rabbit

Isotype:

IgG

Immunogen Catalog Number:

AG8876

GenBank Accession Number:

BC013963

GeneID (NCBI):

10487

UNIPROT ID:

Q01518

Full Name:

CAP, adenylate cyclase-associated protein 1 (yeast)

Calculated MW:

475 aa, 52 kDa

Observed MW:

52 kDa

Purification Method:

Antigen affinity purification

Recommended Dilutions:

WB 1:1000-1:6000

IP 0.5-4.0 µg for 1.0-3.0 mg of total protein lysate

IHC 1:50-1:500

Applications

Tested Applications:

FC, IHC, IP, WB, ELISA

Cited Applications:

IF, WB

Species Specificity:

human, mouse, rat

Cited Species:

human, rat, mouse, pig, bovine

Note-IHC: suggested antigen retrieval with TE buffer pH 9.0; (*) Alternatively, antigen retrieval may be performed with citrate buffer pH 6.0

Positive Controls:

WB: Caco-2 cells, COLO 320 cells, HepG2 cells

IP: A431 cells,

IHC: human pancreas cancer tissue,

Background Information

CAP1, also known as CAP, CAP1-PEN, belongs to the CAP family and contains 1 C-CAP/cofactor C-like domain. CAP1 binds to monomeric actin and regulates the actin cytoskeleton to control cell size, adhesion, and migration (PMID: 23737525). CAP1 also functions as a receptor for inflammatory cytokine resistin (PMID: 24606903). CAP1 is an abundant and ubiquitously expressed protein. Western blot analysis detected CAP1 at an apparent molecular mass of 52 kDa.

Notable Publications

Author	Pubmed ID	Journal	Application
Anika Heinze	36264429	Cell Mol Life Sci	WB
Shunli Yang	31684202	Viruses	WB
Xiaohan Yuan	30847953	Cell Biochem Funct	WB

Storage

Storage:

Store at -20°C. Stable for one year after shipment.

Storage Buffer:

PBS with 0.02% sodium azide and 50% glycerol pH 7.3.

Aliquoting is unnecessary for -20°C storage

*** 20ul sizes contain 0.1% BSA

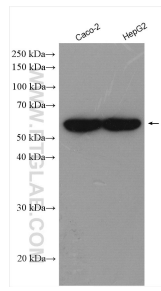
For technical support and original validation data for this product please contact:

T: 1 (888) 4PTGLAB (1-888-478-4522) (toll free in USA), or 1(312) 455-8498 (outside USA)

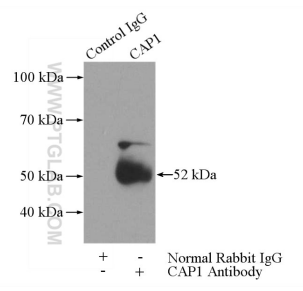
E: proteintech@ptglab.com
W: ptglab.com

This product is exclusively available under Proteintech Group brand and is not available to purchase from any other manufacturer.

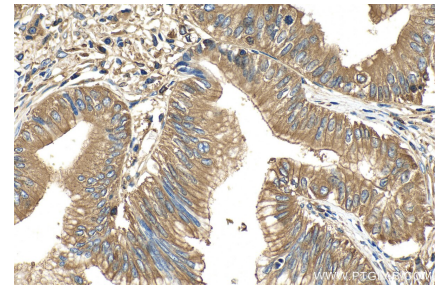
Selected Validation Data



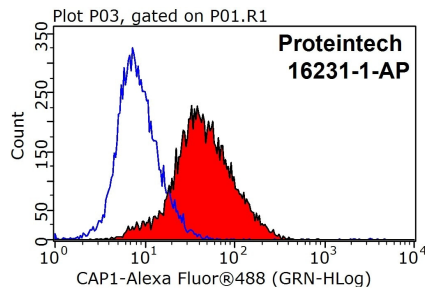
Caco-2 cells were subjected to SDS PAGE followed by western blot with 16231-1-AP (CAP1 antibody) at dilution of 1:3000 incubated at room temperature for 1.5 hours.



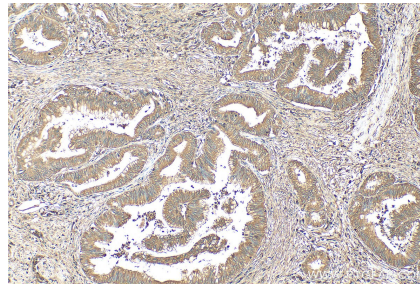
IP result of anti-CAP1 (IP:16231-1-AP, 3ug; Detection:16231-1-AP 1:500) with A431 cells lysate 1520ug.



Immunohistochemical analysis of paraffin-embedded human pancreas cancer tissue slide using 16231-1-AP (CAP1 antibody) at dilution of 1:200 (under 40x lens). Heat mediated antigen retrieval with Tris-EDTA buffer (pH 9.0).



1X10⁶ HeLa cells were stained with 0.2ug CAP1 antibody (16231-1-AP, red) and control antibody (blue). Fixed with 90% MeOH blocked with 3% BSA (30 min). Alexa Fluor 488-conjugated AffiniPure Goat Anti-Rabbit IgG(H+L) with dilution 1:1000.



Immunohistochemical analysis of paraffin-embedded human pancreas cancer tissue slide using 16231-1-AP (CAP1 antibody) at dilution of 1:200 (under 10x lens). Heat mediated antigen retrieval with Tris-EDTA buffer (pH 9.0).