

For Research Use Only

RPL10L Polyclonal antibody

Catalog Number: 16222-1-AP



Basic Information

Catalog Number: 16222-1-AP	GenBank Accession Number: BC014310	Purification Method: Antigen affinity purification
Size: 150ul , Concentration: 650 µg/ml by Nanodrop;	GeneID (NCBI): 140801	Recommended Dilutions: WB 1:1000-1:6000
Source: Rabbit	UNIPROT ID: Q96L21	
Isotype: IgG	Full Name: ribosomal protein L10-like	
Immunogen Catalog Number: AG9275	Calculated MW: 214 aa, 25 kDa	
	Observed MW: 25 kDa	

Applications

Tested Applications: WB, ELISA	Positive Controls: WB : HEK-293 cells, mouse brain tissue, HeLa cells, SKOV-3 cells, mouse testis tissue, rat testis tissue
Species Specificity: human, mouse, rat	

Background Information

RPL10L (Ribosomal Protein L10 Like), is a testis-specific component of the ribosome, is responsible for regulating the biosynthesis and folding of a subset of male germ-cell-specific proteins that are essential for the formation of sperm(Uniprot). RPL10L plays an essential role during meiosis of spermatogenesis by compensating for its X-linked parental paralog, RPL10, during and after meiotic sex chromosome inactivation(MSCI) (PMID: 28502657).

Storage

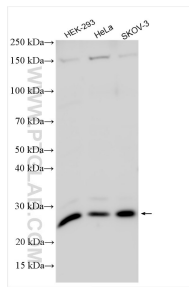
Storage:
Store at -20°C. Stable for one year after shipment.
Storage Buffer:
PBS with 0.02% sodium azide and 50% glycerol pH 7.3.
Aliquoting is unnecessary for -20°C storage

*** 20ul sizes contain 0.1% BSA

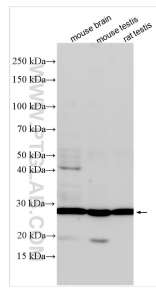
For technical support and original validation data for this product please contact:
T: 1 (888) 4PTGLAB (1-888-478-4522) (toll free in USA), or 1(312) 455-8498 (outside USA)
E: proteintech@ptglab.com
W: ptglab.com

This product is exclusively available under Proteintech Group brand and is not available to purchase from any other manufacturer.

Selected Validation Data



Various lysates were subjected to SDS PAGE followed by western blot with 16222-1-AP (RPL10L antibody) at dilution of 1:3000 incubated at room temperature for 1.5 hours.



Various lysates were subjected to SDS PAGE followed by western blot with 16222-1-AP (RPL10L antibody) at dilution of 1:2000 incubated at room temperature for 1.5 hours.