

For Research Use Only

# MTF2 Polyclonal antibody

Catalog Number: 16208-1-AP

Featured Product

25 Publications



## Basic Information

### Catalog Number:

16208-1-AP

### Size:

150ul, Concentration: 700 µg/ml by Nanodrop and 287 µg/ml by Bradford method using BSA as the standard;

### Source:

Rabbit

### Isotype:

IgG

### Immunogen Catalog Number:

AG9182

### GenBank Accession Number:

BC010013

### GeneID (NCBI):

22823

### UNIPROT ID:

Q9Y483

### Full Name:

metal response element binding transcription factor 2

### Calculated MW:

536 aa, 61 kDa

### Observed MW:

67 kDa, 60 kDa, 60-61 kDa

### Purification Method:

Antigen affinity purification

### Recommended Dilutions:

WB 1:200-1:1000

IP 0.5-4.0 ug for 1.0-3.0 mg of total protein lysate

IHC 1:20-1:200

IF 1:50-1:200

## Applications

### Tested Applications:

WB, IP, IF, IHC, ELISA

### Cited Applications:

WB, IP, IF, IHC, ChIP

### Species Specificity:

human, mouse, rat

### Cited Species:

human, mouse

### Positive Controls:

WB : HepG2 cells, Jurkat cells, mouse ES cells and 293 cells

IP : mouse skeletal muscle tissue,

IHC : human brain tissue,

IF : mouse ES cells,

**Note-IHC: suggested antigen retrieval with TE buffer pH 9.0; (\*) Alternatively, antigen retrieval may be performed with citrate buffer pH 6.0**

## Background Information

MTF2, also named as Metal-response element-binding transcription factor 2, is a 593 amino acid protein. It exists several isoforms and the range of the molecular weight of isoforms are about 55-60 kDa and 29 kDa. MTF2 contains 2 PHD-type zinc fingers and belongs to the Polycomblike family. MTF2 acts by binding to H3K36me3, a mark for transcriptional activation, and recruiting the PRC2 complex, leading to enhance PRC2 H3K27me3 methylation activity and regulates the transcriptional networks during embryonic stem cell self-renewal and differentiation.

## Notable Publications

Author	Pubmed ID	Journal	Application
Manuel Beltran	31548724	Nat Struct Mol Biol	WB
Evan Healy	31521505	Mol Cell	WB
Haojie Li	28869966	Nature	WB

## Storage

### Storage:

Store at -20°C. Stable for one year after shipment.

### Storage Buffer:

PBS with 0.02% sodium azide and 50% glycerol pH 7.3.

Aliquoting is unnecessary for -20°C storage

\*\*\* 20ul sizes contain 0.1% BSA

For technical support and original validation data for this product please contact:

T: 1 (888) 4PTGLAB (1-888-478-4522) (toll free in USA), or 1(312) 455-8498 (outside USA)

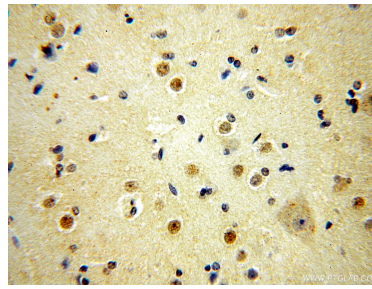
E: proteintech@ptglab.com  
W: ptglab.com

This product is exclusively available under Proteintech Group brand and is not available to purchase from any other manufacturer.

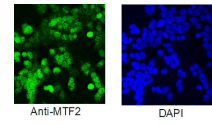
## Selected Validation Data



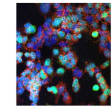
HepG2 cells were subjected to SDS PAGE followed by western blot with 16208-1-AP (MTF2 antibody) at dilution of 1:300 incubated at room temperature for 1.5 hours.



Immunohistochemical analysis of paraffin-embedded human brain using 16208-1-AP (MTF2 antibody) at dilution of 1:50 (under 40x lens).

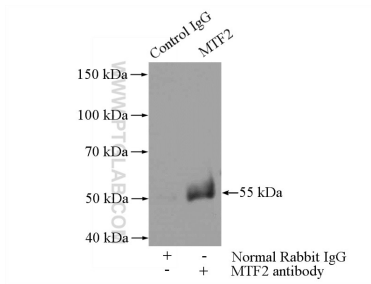


IF result of mouse ES cell. From Kevin Corbit.



MTF2  
E-cadherin  
DAPI

IF result of mouse ES cell From Kevin Corbit.



IP result of anti-MTF2 (IP:16208-1-AP, 4ug; Detection:16208-1-AP 1:300) with mouse skeletal muscle tissue lysate 4000ug.