

For Research Use Only

RAB22A-specific Polyclonal antibody



Catalog Number: 16181-1-AP

1 Publications

Basic Information

Catalog Number: 16181-1-AP	GenBank Accession Number: NM_020673	Purification Method: Antigen affinity purification
Size: 150ul , Concentration: 133 µg/ml by Bradford method using BSA as the standard;	GeneID (NCBI): 57403	Recommended Dilutions: WB 1:500-1:1000
Source: Rabbit	Full Name: RAB22A, member RAS oncogene family	
Isotype: IgG	Calculated MW: 22 kDa	
	Observed MW: 22 kDa	

Applications

Tested Applications: WB, ELISA	Positive Controls: WB : human kidney tissue, HEK-293 cells
Species Specificity: human, mouse	

Background Information

The protein is a member of the RAB family of small GTPases. It localizes in the MHC1-containing recycling endosomal tubules and function in endocytic pathway. It shares 81% identity with RAB31. This antibody can specifically bind RAB22a.

Notable Publications

Author	Pubmed ID	Journal	Application
Liang Sun	30272274	Int J Oncol	

Storage

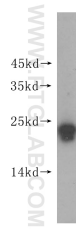
Storage:
Store at -20°C. Stable for one year after shipment.
Storage Buffer:
PBS with 0.02% sodium azide and 50% glycerol pH 7.3.
Aliquoting is unnecessary for -20°C storage

*** 20ul sizes contain 0.1% BSA

For technical support and original validation data for this product please contact:
T: 1 (888) 4PTGLAB (1-888-478-4522) (toll free in USA), or 1(312) 455-8498 (outside USA)
E: proteintech@ptglab.com
W: ptglab.com

This product is exclusively available under Proteintech Group brand and is not available to purchase from any other manufacturer.

Selected Validation Data



human kidney tissue were subjected to SDS PAGE followed by western blot with 16181-1-AP (RAB22A-specific antibody) at dilution of 1:300 incubated at room temperature for 1.5 hours.