

For Research Use Only

MRPL53 Polyclonal antibody

Catalog Number: 16142-1-AP



Basic Information

| | | |
|--|--|---|
| Catalog Number: 16142-1-AP | GenBank Accession Number: BC012163 | Purification Method: Antigen affinity purification |
| Size: 150ul , Concentration: 500 µg/ml by Nanodrop and 393 µg/ml by Bradford method using BSA as the standard; | GeneID (NCBI): 116540 | Recommended Dilutions: WB 1:200-1:1000 IHC 1:20-1:200 IF 1:10-1:100 |
| Source: Rabbit | Full Name: mitochondrial ribosomal protein L53 | |
| Isotype: IgG | Calculated MW: 112 aa, 12 kDa | |
| Immunogen Catalog Number: AG9210 | Observed MW: 12 kDa | |

Applications

Tested Applications:

IF, IHC, WB, ELISA

Species Specificity:

human, mouse, rat

Note-IHC: suggested antigen retrieval with TE buffer pH 9.0; (*) Alternatively, antigen retrieval may be performed with citrate buffer pH 6.0

Positive Controls:

WB : A549 cells,

IHC : human skin cancer tissue,

IF : A549 cells,

Background Information

Storage

Storage:

Store at -20°C. Stable for one year after shipment.

Storage Buffer:

PBS with 0.02% sodium azide and 50% glycerol pH 7.3.

Aliquoting is unnecessary for -20°C storage

*** 20ul sizes contain 0.1% BSA

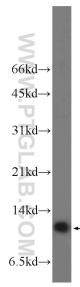
For technical support and original validation data for this product please contact:

T: 1 (888) 4PTGLAB (1-888-478-4522) (toll free in USA), or 1(312) 455-8498 (outside USA)

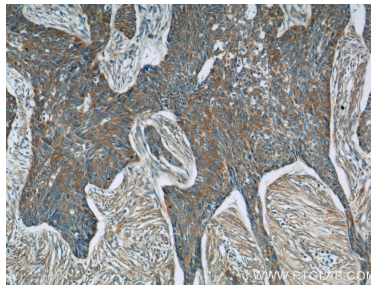
E: proteintech@ptglab.com
W: ptglab.com

This product is exclusively available under Proteintech Group brand and is not available to purchase from any other manufacturer.

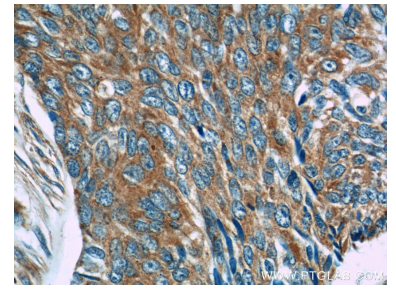
Selected Validation Data



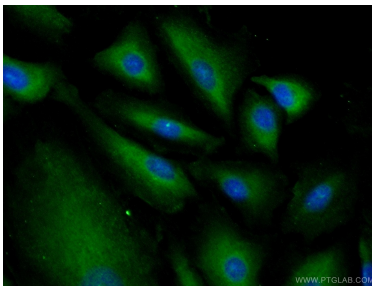
A549 cells were subjected to SDS PAGE followed by western blot with 16142-1-AP (MRPL53 Antibody) at dilution of 1:300 incubated at room temperature for 1.5 hours.



Immunohistochemical analysis of paraffin-embedded human skin cancer tissue slide using 16142-1-AP (MRPL53 Antibody) at dilution of 1:50 (under 10x lens).



Immunohistochemical analysis of paraffin-embedded human skin cancer tissue slide using 16142-1-AP (MRPL53 Antibody) at dilution of 1:50 (under 40x lens).



Immunofluorescent analysis of (-20°C Ethanol) fixed A549 cells using 16142-1-AP (MRPL53 antibody) at dilution of 1:25 and Alexa Fluor 488-conjugated AffiniPure Goat Anti-Rabbit IgG(H+L).