

For Research Use Only

PCBP3 Polyclonal antibody

Catalog Number: 16141-1-AP



Basic Information

Catalog Number: 16141-1-AP	GenBank Accession Number: BC012061	Purification Method: Antigen affinity purification
Size: 150ul , Concentration: 500 µg/ml by Nanodrop;	GeneID (NCBI): 54039	Recommended Dilutions: WB 1:500-1:3000
Source: Rabbit	Full Name: poly(rC) binding protein 3	
Isotype: IgG	Calculated MW: 313 aa, 33 kDa	
Immunogen Catalog Number: AG9202	Observed MW: 37 kDa	

Applications

Tested Applications: WB, ELISA	Positive Controls: WB : HT-1080 cells, K-562 cells, MCF-7 cells
Species Specificity: human	

Background Information

PCBP3 is a member of the KH-domain protein subfamily. Proteins of this subfamily, also referred to as alpha-CPs, bind to RNA with a specificity for C-rich pyrimidine regions. Alpha-CPs play important roles in post-transcriptional activities and have different cellular distributions.

Storage

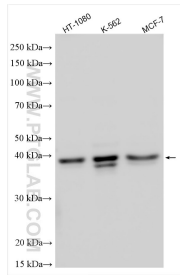
Storage:
Store at -20°C. Stable for one year after shipment.
Storage Buffer:
PBS with 0.02% sodium azide and 50% glycerol pH 7.3.
Aliquoting is unnecessary for -20°C storage

*** 20ul sizes contain 0.1% BSA

For technical support and original validation data for this product please contact:
T: 1 (888) 4PTGLAB (1-888-478-4522) (toll free in USA), or 1(312) 455-8498 (outside USA) E: proteintech@ptglab.com
W: ptglab.com

This product is exclusively available under Proteintech Group brand and is not available to purchase from any other manufacturer.

Selected Validation Data



Various lysates were subjected to SDS PAGE followed by western blot with 16141-1-AP (PCBP3 antibody) at dilution of 1:1500 incubated at room temperature for 1.5 hours.