

For Research Use Only

GNB2 Polyclonal antibody

Catalog Number: 16090-1-AP **1 Publications**



Basic Information

Catalog Number: 16090-1-AP	GenBank Accession Number: BC010073	Purification Method: Antigen affinity purification
Size: 150ul , Concentration: 350 µg/ml by Nanodrop and 187 µg/ml by Bradford method using BSA as the standard;	GeneID (NCBI): 2783	Recommended Dilutions: WB 1:500-1:2000 IHC 1:20-1:200 IF 1:10-1:100
Source: Rabbit	Full Name: guanine nucleotide binding protein (G protein), beta polypeptide 2	
Isotype: IgG	Calculated MW: 340 aa, 37 kDa	
Immunogen Catalog Number: AG9125	Observed MW: 37 kDa	

Applications

Tested Applications: IF, IHC, WB, ELISA	Positive Controls: WB : HeLa cells, HEK-293 cells, Jurkat cells IHC : human ovary tumor tissue, IF : HepG2 cells,
Species Specificity: human, mouse	
Cited Species: mouse	

Note-IHC: suggested antigen retrieval with TE buffer pH 9.0; (*) Alternatively, antigen retrieval may be performed with citrate buffer pH 6.0

Background Information

GNB2(Guanine nucleotide-binding protein G(I)/G(S)/G(T) subunit beta-2) is also named as G protein subunit beta-2, transducin beta chain 2 and belongs to the WD repeat G protein beta family. G proteins are involved as a modulator or transducer in various transmembrane signaling systems. The beta and gamma chains are required for the GTPase activity, for replacement of GDP by GTP, and for G protein-effector interaction.

Notable Publications

Author	Pubmed ID	Journal	Application
Yue Zheng	35845072	Front Cardiovasc Med	

Storage

Storage:
Store at -20°C. Stable for one year after shipment.
Storage Buffer:
PBS with 0.02% sodium azide and 50% glycerol pH 7.3.
Aliquoting is unnecessary for -20°C storage

*** 20ul sizes contain 0.1% BSA

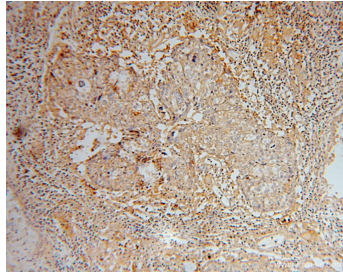
For technical support and original validation data for this product please contact:
T: 1 (888) 4PTGLAB (1-888-478-4522) (toll free in USA), or 1(312) 455-8498 (outside USA)
E: proteintech@ptglab.com
W: ptglab.com

This product is exclusively available under Proteintech Group brand and is not available to purchase from any other manufacturer.

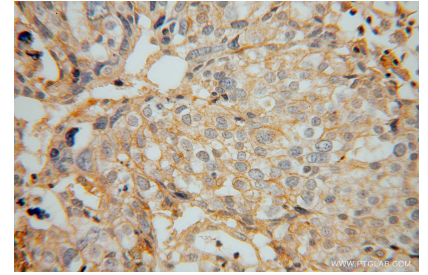
Selected Validation Data



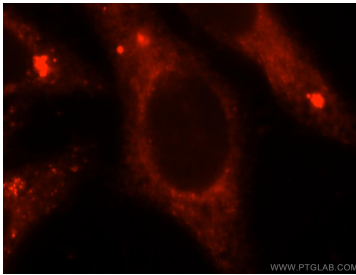
HeLa cells were subjected to SDS PAGE followed by western blot with 16090-1-AP (GNB2 antibody) at dilution of 1:500 incubated at room temperature for 1.5 hours.



Immunohistochemical analysis of paraffin-embedded human ovary tumor using 16090-1-AP (GNB2 antibody) at dilution of 1:50 (under 10x lens).



Immunohistochemical analysis of paraffin-embedded human ovary tumor using 16090-1-AP (GNB2 antibody) at dilution of 1:50 (under 40x lens).



Immunofluorescent analysis of HepG2 cells, using GNB2 antibody 16090-1-AP at 1:25 dilution and Rhodamine-labeled goat anti-rabbit IgG (red).