

For Research Use Only

IFFO1 Polyclonal antibody

Catalog Number: 16041-1-AP

1 Publications



Basic Information

Catalog Number: 16041-1-AP	GenBank Accession Number: BC004384	Purification Method: Antigen affinity purification
Size: 150ul , Concentration: 1000 µg/ml by Nanodrop and 520 µg/ml by Bradford method using BSA as the standard;	GeneID (NCBI): 25900	Recommended Dilutions: WB 1:500-1:2000 IHC 1:20-1:200 IF 1:10-1:100
Source: Rabbit	Full Name: intermediate filament family orphan 1	
Isotype: IgG	Calculated MW: 62 kDa	
Immunogen Catalog Number: AG8915	Observed MW: 75-85 kDa	

Applications

Tested Applications:

IF, IHC, WB, ELISA

Cited Applications:

IHC

Species Specificity:

human, mouse, rat

Cited Species:

human

Note-IHC: suggested antigen retrieval with TE buffer pH 9.0; (*) Alternatively, antigen retrieval may be performed with citrate buffer pH 6.0

Positive Controls:

WB : mouse brain tissue, human brain tissue, mouse testis tissue

IHC : human brain tissue,

IF : HeLa cells,

Background Information

IFFO1, also named as IFFO and Tumor antigen HOM-TE5-103, is a member of the intermediate filament family which consists of primordial components of the cytoskeleton and nuclear envelope that are mainly distributed in the nucleus, followed by the cytoskeleton and cytoplasm. IFFO1 in the nucleus was identified to combine with both XRCC4 and the nuclear lamina protein lamin A/C to be involved in nonhomologous DNA end joining (NHEJ). The expression of IFFO1 is associated with tumor progression. IFFO1 could be used as a potential marker to differentiate malignant ascites cell-free tumor DNA (cftDNA) of ovarian cancer from benign controls.

Notable Publications

Author	Pubmed ID	Journal	Application
Ye Zhang	36257380	Cancer Lett	IHC

Storage

Storage:

Store at -20°C. Stable for one year after shipment.

Storage Buffer:

PBS with 0.02% sodium azide and 50% glycerol pH 7.3.

Aliquoting is unnecessary for -20°C storage

*** 20ul sizes contain 0.1% BSA

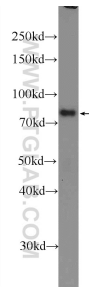
For technical support and original validation data for this product please contact:

T: 1 (888) 4PTGLAB (1-888-478-4522) (toll free in USA), or 1(312) 455-8498 (outside USA)

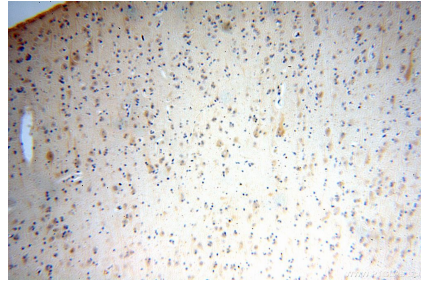
E: proteintech@ptglab.com
W: ptglab.com

This product is exclusively available under Proteintech Group brand and is not available to purchase from any other manufacturer.

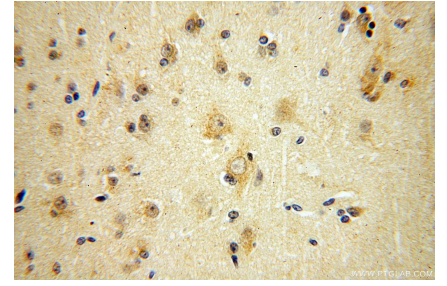
Selected Validation Data



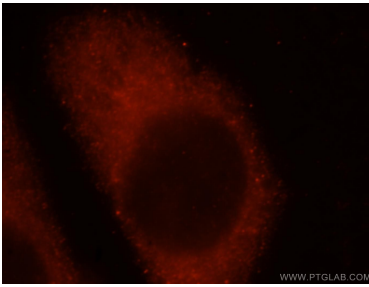
mouse brain tissue were subjected to SDS PAGE followed by western blot with 16041-1-AP (IFFO1 Antibody) at dilution of 1:1000 incubated at room temperature for 1.5 hours.



Immunohistochemical analysis of paraffin-embedded human brain using 16041-1-AP (IFFO1 antibody) at dilution of 1:100 (under 10x lens).



Immunohistochemical analysis of paraffin-embedded human brain using 16041-1-AP (IFFO1 antibody) at dilution of 1:100 (under 40x lens).



Immunofluorescent analysis of HeLa cells, using IFFO1 antibody 16041-1-AP at 1:25 dilution and Rhodamine-labeled goat anti-rabbit IgG (red).