

TIPE2 Polyclonal antibody

Catalog Number: 15940-1-AP

Featured Product

35 Publications

Basic Information

Catalog Number: 15940-1-AP	GenBank Accession Number: BC063014	Purification Method: Antigen affinity purification
Size: 150ul , Concentration: 400 µg/ml by Nanodrop and 187 µg/ml by Bradford method using BSA as the standard;	GeneID (NCBI): 79626	Recommended Dilutions: WB 1:1000-1:6000 IP 0.5-4.0 ug for 1.0-3.0 mg of total protein lysate
Source: Rabbit	Full Name: tumor necrosis factor, alpha-induced protein 8-like 2	IHC 1:50-1:500 IF 1:50-1:500
Isotype: IgG	Calculated MW: 184 aa, 21 kDa	
Immunogen Catalog Number: AG7964	Observed MW: 18-20 kDa	

Applications

Tested Applications:
FC, IF, IHC, IP, WB, ELISA

Cited Applications:
IF, IHC, IP, WB

Species Specificity:
human, mouse, rat

Cited Species:
human, rat, mouse

Note-IHC: suggested antigen retrieval with TE buffer pH 9.0; (*) Alternatively, antigen retrieval may be performed with citrate buffer pH 6.0

Positive Controls:

WB : THP-1 cells, mouse small intestine tissue, mouse cerebellum tissue, rat lymph tissue, rat spleen tissue, RAW 264.7 cells, mouse spleen tissue

IP : mouse spleen tissue,

IHC : human lymphoma tissue, human ovary tumor tissue, mouse spleen tissue

IF : RAW 264.7 cells, HepG2 cells

Background Information

TIPE2 (TNF- α -inducible protein 8-like 2, or TNFAIP8L2), a negative immune regulator, is essential for maintaining immune homeostasis. TIPE2 shares considerable sequence homology with members of the tumor necrosis factor- α -inducible protein 8 (TNFAIP8) family, which are thought to regulate cellular and immune homeostasis. TIPE2 acts as a negative regulator of Toll-like receptor and T-cell receptor function and is preferentially expressed in lymphoid tissues. TIPE2 plays an essential role for a signal transduction pathway that links inflammatory immune response to specific conditions after cerebral ischemia

Notable Publications

Author	Pubmed ID	Journal	Application
Jiacheng Bi	34524845	Sci Adv	WB
Michitaka Oho	27601471	J Biol Chem	WB,IF
Svetlana A Fayngerts	29058702	Nat Immunol	WB,IF,IP

Storage

Storage:

Store at -20°C. Stable for one year after shipment.

Storage Buffer:

PBS with 0.02% sodium azide and 50% glycerol pH 7.3.

Aliquoting is unnecessary for -20°C storage

*** 20ul sizes contain 0.1% BSA

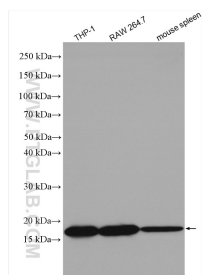
For technical support and original validation data for this product please contact:

T: 1 (888) 4PTGLAB (1-888-478-4522) (toll free in USA), or 1(312) 455-8498 (outside USA)

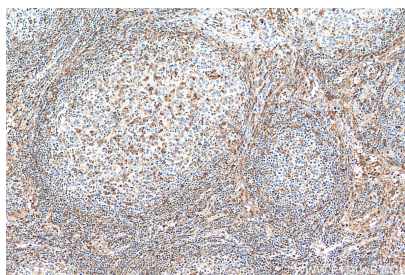
E: proteintech@ptglab.com
W: ptglab.com

This product is exclusively available under Proteintech Group brand and is not available to purchase from any other manufacturer.

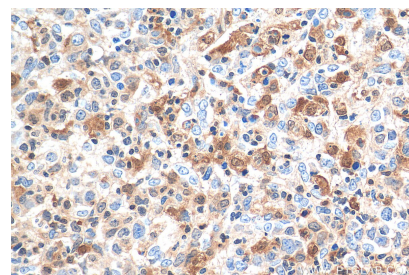
Selected Validation Data



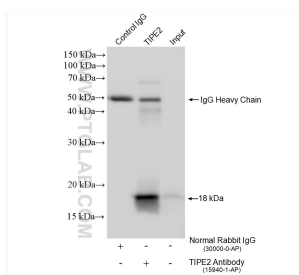
Various lysates were subjected to SDS PAGE followed by western blot with 15940-1-AP (TIPE2 antibody) at dilution of 1:3000 incubated at room temperature for 1.5 hours.



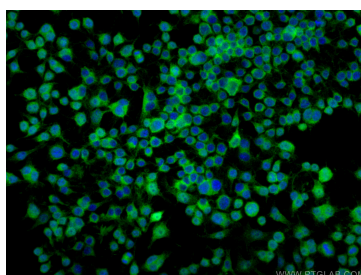
Immunohistochemical analysis of paraffin-embedded human lymphoma tissue slide using 15940-1-AP (TIPE2 antibody) at dilution of 1:200 (under 10x lens). Heat mediated antigen retrieval with Tris-EDTA buffer (pH 9.0).



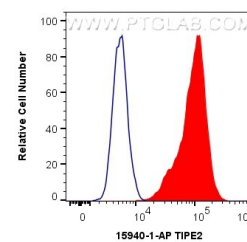
Immunohistochemical analysis of paraffin-embedded human lymphoma tissue slide using 15940-1-AP (TIPE2 antibody) at dilution of 1:200 (under 40x lens). Heat mediated antigen retrieval with Tris-EDTA buffer (pH 9.0).



IP result of anti-TIPE2 (IP: 15940-1-AP, 4ug; Detection: 15940-1-AP 1:2000) with mouse spleen tissue lysate 1400 ug.



Immunofluorescent analysis of (4% PFA) fixed RAW 264.7 cells using TIPE2 antibody (15940-1-AP) at dilution of 1:200 and CoraLite®488-Conjugated AffiniPure Goat Anti-Rabbit IgG(H+L).



1×10^6 THP-1 cells were intracellularly stained with 0.4 ug Anti-Human TIPE2 (15940-1-AP) and CoraLite®488-Conjugated AffiniPure Goat Anti-Rabbit IgG(H+L) at dilution 1:1000 (red), or 0.4 ug Isotype Control. Cells were fixed with 4% PFA and permeabilized with Flow Cytometry Perm Buffer (PF00011-C).