

For Research Use Only

# MRPL38 Polyclonal antibody

Catalog Number: 15913-1-AP **3 Publications**



## Basic Information

<b>Catalog Number:</b> 15913-1-AP	<b>GenBank Accession Number:</b> BC013311	<b>Purification Method:</b> Antigen affinity purification
<b>Size:</b> 150ul , Concentration: 720 µg/ml by Nanodrop;	<b>GeneID (NCBI):</b> 64978	<b>Recommended Dilutions:</b> WB 1:500-1:2000 IHC 1:50-1:500
<b>Source:</b> Rabbit	<b>Full Name:</b> mitochondrial ribosomal protein L38	
<b>Isotype:</b> IgG	<b>Calculated MW:</b> 346 aa, 41 kDa	
<b>Immunogen Catalog Number:</b> AG8706	<b>Observed MW:</b> 37-45 kDa	

## Applications

**Tested Applications:**  
IHC, WB, ELISA

**Cited Applications:**  
IHC, WB

**Species Specificity:**  
human, mouse, rat

**Cited Species:**  
rat, mouse

**Note-IHC: suggested antigen retrieval with TE buffer pH 9.0; (\*) Alternatively, antigen retrieval may be performed with citrate buffer pH 6.0**

**Positive Controls:**

**WB :** mouse brain tissue, mouse liver tissue, human placenta tissue

**IHC :** human liver tissue, mouse brain tissue

## Background Information

### Notable Publications

Author	Pubmed ID	Journal	Application
Mustafa Bilal Bayazit	35830789	Cell Rep	WB
Jana Key	38139332	Int J Mol Sci	WB
Takeshi Tanaka	30726815	J Toxicol Sci	IHC

## Storage

**Storage:**

Store at -20°C. Stable for one year after shipment.

**Storage Buffer:**

PBS with 0.02% sodium azide and 50% glycerol pH 7.3.

Aliquoting is unnecessary for -20°C storage

\*\*\* 20ul sizes contain 0.1% BSA

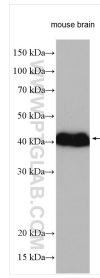
For technical support and original validation data for this product please contact:

T: 1 (888) 4PTGLAB (1-888-478-4522) (toll free in USA), or 1(312) 455-8498 (outside USA)

E: proteintech@ptglab.com  
W: ptglab.com

This product is exclusively available under Proteintech Group brand and is not available to purchase from any other manufacturer.

## Selected Validation Data



mouse brain tissue were subjected to SDS PAGE followed by western blot with 15913-1-AP (MRPL38 antibody) at dilution of 1:1000 incubated at room temperature for 1.5 hours.



Immunohistochemical analysis of paraffin-embedded human liver tissue slide using 15913-1-AP (MRPL38 antibody) at dilution of 1:200 (under 10x lens). Heat mediated antigen retrieval with Tris-EDTA buffer (pH 9.0).