

For Research Use Only

RNASE1 Polyclonal antibody

Catalog Number: 15892-1-AP



Basic Information

Catalog Number: 15892-1-AP	GenBank Accession Number: BC005324	Purification Method: Antigen affinity purification
Size: 150ul , Concentration: 650 µg/ml by Nanodrop;	GeneID (NCBI): 6035	Recommended Dilutions: WB 1:2000-1:12000
Source: Rabbit	Full Name: ribonuclease, RNase A family, 1 (pancreatic)	
Isotype: IgG	Calculated MW: 156 aa, 18 kDa	
Immunogen Catalog Number: AG8679	Observed MW: 18 kDa	

Applications

Tested Applications:
WB, ELISA

Species Specificity:
Mouse, rat

Positive Controls:

WB : mouse pancreas tissue, mouse stomach tissue, rat pancreas tissue

Background Information

Storage

Storage:
Store at -20°C. Stable for one year after shipment.

Storage Buffer:
PBS with 0.02% sodium azide and 50% glycerol pH 7.3.

Aliquoting is unnecessary for -20°C storage

*** 20ul sizes contain 0.1% BSA

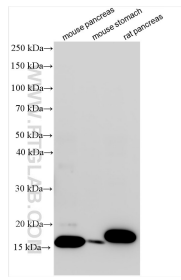
For technical support and original validation data for this product please contact:

T: 1 (888) 4PTGLAB (1-888-478-4522) (toll free in USA), or 1(312) 455-8498 (outside USA)

E: proteintech@ptglab.com
W: ptglab.com

This product is exclusively available under Proteintech Group brand and is not available to purchase from any other manufacturer.

Selected Validation Data



Various lysates were subjected to SDS PAGE followed by western blot with 15892-1-AP (RNASE1 antibody) at dilution of 1:6000 incubated at room temperature for 1.5 hours.