

For Research Use Only

# EIF1, EIF1B Polyclonal antibody

Catalog Number: 15887-1-AP



## Basic Information

|  |  |  |
|--|--|--|
| <b>Catalog Number:</b><br>15887-1-AP   | <b>GenBank Accession Number:</b><br>BC006996                     | <b>Purification Method:</b><br>Antigen affinity purification       |
| <b>Size:</b><br>150ul , Concentration: 240 µg/ml by Nanodrop and 213 µg/ml by Bradford method using BSA as the standard; | <b>GeneID (NCBI):</b><br>10289                                   | <b>Recommended Dilutions:</b><br>WB 1:200-1:1000<br>IHC 1:20-1:200 |
| <b>Source:</b><br>Rabbit   | <b>Full Name:</b><br>eukaryotic translation initiation factor 1B |  |
| <b>Isotype:</b><br>IgG   | <b>Calculated MW:</b><br>113 aa, 13 kDa                          |  |
| <b>Immunogen Catalog Number:</b><br>AG8673   | <b>Observed MW:</b><br>14 kDa                                    |  |

## Applications

|  |  |
|--|--|
| <b>Tested Applications:</b><br>IHC, WB, ELISA  | <b>Positive Controls:</b><br>WB : L02 cells, HeLa cells, HepG2 cells |
| <b>Species Specificity:</b><br>human   | <b>IHC :</b> human kidney tissue,                                    |
| <b>Note-IHC: suggested antigen retrieval with TE buffer pH 9.0; (*) Alternatively, antigen retrieval may be performed with citrate buffer pH 6.0</b> |  |

## Background Information

### Storage

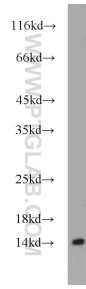
**Storage:**  
Store at -20°C. Stable for one year after shipment.  
**Storage Buffer:**  
PBS with 0.02% sodium azide and 50% glycerol pH 7.3.  
Aliquoting is unnecessary for -20°C storage

\*\*\* 20ul sizes contain 0.1% BSA

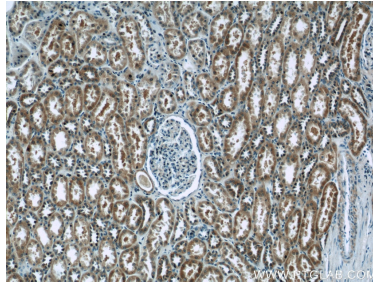
For technical support and original validation data for this product please contact:  
T: 1 (888) 4PTGLAB (1-888-478-4522) (toll free in USA), or 1(312) 455-8498 (outside USA) E: proteintech@ptglab.com W: ptglab.com

This product is exclusively available under Proteintech Group brand and is not available to purchase from any other manufacturer.

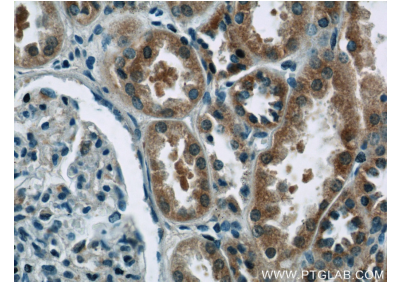
## Selected Validation Data



L02 cells were subjected to SDS PAGE followed by western blot with 15887-1-AP (EIF1B antibody) at dilution of 1:300 incubated at room temperature for 1.5 hours.



Immunohistochemical analysis of paraffin-embedded human kidney tissue slide using 15887-1-AP (EIF1B Antibody) at dilution of 1:50 (under 10x lens).



Immunohistochemical analysis of paraffin-embedded human kidney tissue slide using 15887-1-AP (EIF1B Antibody) at dilution of 1:50 (under 40x lens).