

For Research Use Only

INT11 Polyclonal antibody

Catalog Number: 15860-1-AP



Basic Information

Catalog Number: 15860-1-AP	GenBank Accession Number: BC007978	Purification Method: Antigen affinity purification
Size: 150ul , Concentration: 150 µg/ml by Nanodrop and 133 µg/ml by Bradford method using BSA as the standard;	GeneID (NCBI): 54973	Recommended Dilutions: WB 1:200-1:1000 IF 1:20-1:200
Source: Rabbit	Full Name: cleavage and polyadenylation specific factor 3-like	
Isotype: IgG	Calculated MW: 600 aa, 68 kDa	
Immunogen Catalog Number: AG8365	Observed MW: 68 kDa	

Applications

Tested Applications: IF, WB, ELISA	Positive Controls: WB : mouse colon tissue, mouse spleen tissue
Species Specificity: human, mouse	IF : HepG2 cells,

Background Information

Integrator complex subunit 11 (INT11) is a protein that in humans is encoded by the INTS11 gene. INTS11, also known as Cleavage and Polyadenylation Specific Factor 3-Like (CPSF3L), contains a metallo-β-lactamase and β-CASP domain that, together, coordinate two zinc ions within the active site to promote its RNA endonuclease activity. INTS11 is the catalytic subunit of the Integrator (INT) complex, which is crucial for the biogenesis of small nuclear RNAs and enhancer RNAs. INT11 has 5 isoforms with the molecular mass of 56 and 65-68 kDa (PMID: 34516911, PMID: 37054711).

Storage

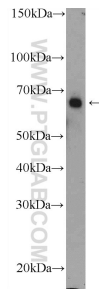
Storage:
Store at -20°C. Stable for one year after shipment.
Storage Buffer:
PBS with 0.02% sodium azide and 50% glycerol pH 7.3.
Aliquoting is unnecessary for -20°C storage

*** 20ul sizes contain 0.1% BSA

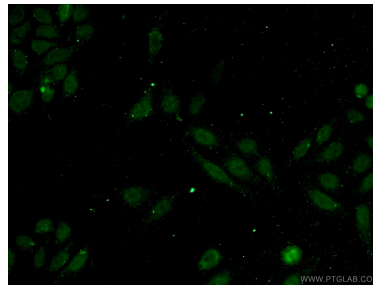
For technical support and original validation data for this product please contact:
T: 1 (888) 4PTGLAB (1-888-478-4522) (toll free in USA), or 1(312) 455-8498 (outside USA)
E: proteintech@ptglab.com
W: ptglab.com

This product is exclusively available under Proteintech Group brand and is not available to purchase from any other manufacturer.

Selected Validation Data



mouse colon tissue were subjected to SDS PAGE followed by western blot with 15860-1-AP (INT 11 Antibody) at dilution of 1:300 incubated at room temperature for 1.5 hours.



Immunofluorescent analysis of HepG2 cells using 15860-1-AP (INT 11 antibody) at dilution of 1:50 and Alexa Fluor 488-conjugated AffiniPure Goat Anti-Rabbit IgG(H+L).