

For Research Use Only

RPL29 Polyclonal antibody

Catalog Number: 15799-1-AP **4 Publications**



Basic Information

Catalog Number: 15799-1-AP	GenBank Accession Number: BC008926	Purification Method: Antigen affinity purification
Size: 150ul , Concentration: 450 µg/ml by Nanodrop;	GeneID (NCBI): 6159	Recommended Dilutions: WB 1:2000-1:12000 IHC 1:20-1:200 IF 1:200-1:800
Source: Rabbit	Full Name: ribosomal protein L29	
Isotype: IgG	Calculated MW: 159 aa, 18 kDa	
Immunogen Catalog Number: AG8510	Observed MW: 20-25 kDa	

Applications

Tested Applications:
IF, IHC, WB, ELISA

Cited Applications:
WB

Species Specificity:
human, mouse, rat

Cited Species:
human, mouse

Positive Controls:

WB : HeLa cells, HEK-293T cells, NIH/3T3 cells, C6 cells, mouse pancreas tissue, HUVEC cells, HepG2 cells

IHC : human breast cancer tissue, human liver cancer tissue

IF : HepG2 cells,

Note-IHC: suggested antigen retrieval with TE buffer pH 9.0; (*) Alternatively, antigen retrieval may be performed with citrate buffer pH 6.0

Background Information

Ribosomal protein L29 (Rpl29) is a component of the large (60S) ribosomal subunit which is abundantly expressed in all cell types, plays a regulatory role in translation efficiency and is essential for protein synthesis (PMID: 17195189). In contrast to adult tissues, RPL29 displays a much more widespread pattern of expression throughout embryonic development, and high levels of RPL29 are found in all developing organs. Several reports showed that RPL29 expression is up-regulated in human carcinomas and constitutes a candidate marker for abnormal growth when overexpressed (PMID: 9788632, 10383165). The antibody can detect the band around 22kDa.

Notable Publications

Author	Pubmed ID	Journal	Application
Chandreyee Datta	36306353	Sci Adv	WB
Mohammad Ishaque Ali	33004906	Sci Rep	WB
Heeseon An	32612236	Nature	WB

Storage

Storage:

Store at -20°C. Stable for one year after shipment.

Storage Buffer:

PBS with 0.02% sodium azide and 50% glycerol pH 7.3.

Aliquoting is unnecessary for -20°C storage

*** 20ul sizes contain 0.1% BSA

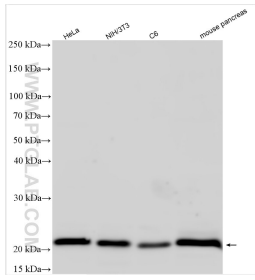
For technical support and original validation data for this product please contact:

T: 1 (888) 4PTGLAB (1-888-478-4522) (toll free in USA), or 1(312) 455-8498 (outside USA)

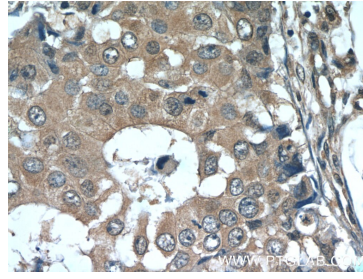
E: proteintech@ptglab.com
W: ptglab.com

This product is exclusively available under Proteintech Group brand and is not available to purchase from any other manufacturer.

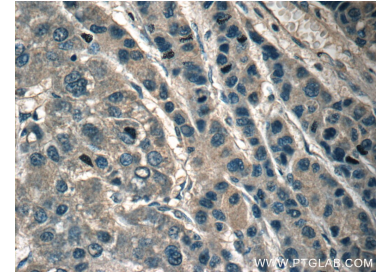
Selected Validation Data



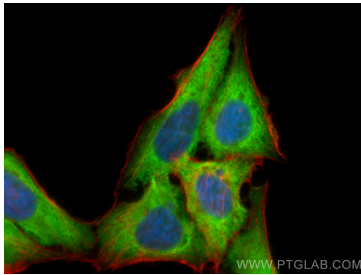
Various lysates were subjected to SDS PAGE followed by western blot with 15799-1-AP (RPL29 antibody) at dilution of 1:6000 incubated at room temperature for 1.5 hours.



Immunohistochemical analysis of paraffin-embedded human breast cancer tissue slide using 15799-1-AP (RPL29 Antibody) at dilution of 1:50 (under 40x lens).



Immunohistochemical analysis of paraffin-embedded human liver cancer tissue slide using 15799-1-AP (RPL29 Antibody) at dilution of 1:50 (under 40x lens).



Immunofluorescent analysis of (4% PFA) fixed HepG2 cells using RPL29 antibody (15799-1-AP) at dilution of 1:400 and CoralLite® 488-Conjugated AffiniPure Goat Anti-Rabbit IgG(H+L), CL594-Phalloidin (red).