

For Research Use Only

# C1QL1 Polyclonal antibody

Catalog Number: 15757-1-AP



## Basic Information

<b>Catalog Number:</b> 15757-1-AP	<b>GenBank Accession Number:</b> BC008798	<b>Purification Method:</b> Antigen affinity purification
<b>Size:</b> 150ul , Concentration: 400 µg/ml by Nanodrop;	<b>GeneID (NCBI):</b> 10882	<b>Recommended Dilutions:</b> WB 1:1000-1:4000 IF 1:50-1:500
<b>Source:</b> Rabbit	<b>Full Name:</b> complement component 1, q subcomponent-like 1	
<b>Isotype:</b> IgG	<b>Calculated MW:</b> 258 aa, 26 kDa	
<b>Immunogen Catalog Number:</b> AG8348	<b>Observed MW:</b> 30 kDa	

## Applications

<b>Tested Applications:</b> IF, WB, ELISA	<b>Positive Controls:</b>
<b>Species Specificity:</b> human, mouse, rat	<b>WB :</b> mouse brain tissue, rat brain tissue <b>IF :</b> mouse cerebellum tissue,

## Background Information

C1QL1 (complement component 1, q subcomponent-like 1) is one of the C1q/tumor-necrosis-factor-related protein (CTRP) family members. C1QL1 is synthesized and secreted mainly by the brain and adipose tissues. It is implicated in synapse formation or elimination in cultured hippocampal neurons in vitro.

## Storage

**Storage:**  
Store at -20°C. Stable for one year after shipment.  
**Storage Buffer:**  
PBS with 0.02% sodium azide and 50% glycerol pH 7.3.  
Aliquoting is unnecessary for -20°C storage

\*\*\* 20ul sizes contain 0.1% BSA

For technical support and original validation data for this product please contact:

T: 1 (888) 4PTGLAB (1-888-478-4522) (toll free in USA), or 1(312) 455-8498 (outside USA)

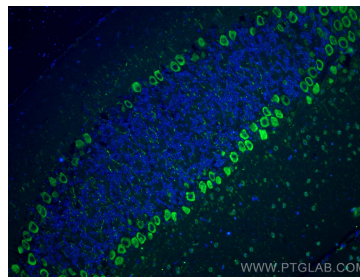
E: [proteintech@ptglab.com](mailto:proteintech@ptglab.com)  
W: [ptglab.com](http://ptglab.com)

This product is exclusively available under Proteintech Group brand and is not available to purchase from any other manufacturer.

## Selected Validation Data



Various lysates were subjected to SDS PAGE followed by western blot with 15757-1-AP (C1QL1 antibody) at dilution of 1:2000 incubated at room temperature for 1.5 hours.



Immunofluorescent analysis of (4% PFA) fixed mouse cerebellum tissue using C1QL1 antibody (15757-1-AP) at dilution of 1:200 and CoraLite® 488-Conjugated AffiniPure Goat Anti-Rabbit IgG(H+L).