

For Research Use Only

RPS20 Polyclonal antibody

Catalog Number: 15692-1-AP **3 Publications**



Basic Information

Catalog Number: 15692-1-AP	GenBank Accession Number: BC007507	Purification Method: Antigen affinity purification
Size: 150ul , Concentration: 400 µg/ml by Nanodrop and 240 µg/ml by Bradford method using BSA as the standard;	GeneID (NCBI): 6224	Recommended Dilutions: WB 1:500-1:2400
Source: Rabbit	Full Name: ribosomal protein S20	
Isotype: IgG	Calculated MW: 13 kDa	
Immunogen Catalog Number: AG8257	Observed MW: 16 kDa	

Applications

Tested Applications: WB, ELISA	Positive Controls: WB : MCF7 cells, HEK-293 cells, HepG2 cells, Jurkat cells
Cited Applications: IHC, WB	
Species Specificity: human, mouse, rat	
Cited Species: human, mouse	

Background Information

Ribosomes, the organelles that catalyze protein synthesis, consist of a small 40S subunit and a large 60S subunit. Together these subunits are composed of 4 RNA species and approximately 80 structurally distinct proteins. RPS20 is a component of the 40S subunit. The protein belongs to the S10P family of ribosomal proteins. It is located in the cytoplasm.

Notable Publications

Author	Pubmed ID	Journal	Application
Cheng Shen	36484407	Oncol Rep	WB,IHC
Teodorus Theo Susanto	38106052	bioRxiv	WB
Jingming Ren	37391878	J Pineal Res	WB

Storage

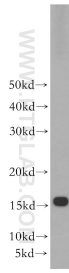
Storage:
Store at -20°C. Stable for one year after shipment.
Storage Buffer:
PBS with 0.02% sodium azide and 50% glycerol pH 7.3.
Aliquoting is unnecessary for -20°C storage

*** 20ul sizes contain 0.1% BSA

For technical support and original validation data for this product please contact:
T: 1 (888) 4PTGLAB (1-888-478-4522) (toll free in USA), or 1(312) 455-8498 (outside USA) E: proteintech@ptglab.com
W: ptglab.com

This product is exclusively available under Proteintech Group brand and is not available to purchase from any other manufacturer.

Selected Validation Data



MCF7 cells were subjected to SDS PAGE followed by western blot with 15692-1-AP (RPS20 antibody) at dilution of 1:500 incubated at room temperature for 1.5 hours.