

For Research Use Only

KLHL13 Polyclonal antibody

Catalog Number: 15612-1-AP



Basic Information

| | | |
|--|---|--|
| Catalog Number: 15612-1-AP | GenBank Accession Number: BC008729 | Purification Method: Antigen affinity purification |
| Size: 150ul , Concentration: 240 µg/ml by Nanodrop and 133 µg/ml by Bradford method using BSA as the standard; | GeneID (NCBI): 90293 | Recommended Dilutions: WB 1:500-1:2000 |
| Source: Rabbit | Full Name: kelch-like 13 (Drosophila) | |
| Isotype: IgG | Calculated MW: 74 kDa | |
| Immunogen Catalog Number: AG8003 | Observed MW: 68 kDa | |

Applications

| | |
|--|--|
| Tested Applications: WB,ELISA | Positive Controls: WB : Jurkat cells, HeLa cells |
| Species Specificity: human, mouse, rat | |

Background Information

Storage

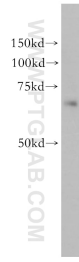
Storage:
Store at -20°C. Stable for one year after shipment.
Storage Buffer:
PBS with 0.02% sodium azide and 50% glycerol pH 7.3.
Aliquoting is unnecessary for -20°C storage

*** 20ul sizes contain 0.1% BSA

For technical support and original validation data for this product please contact:
T: 1 (888) 4PTGLAB (1-888-478-4522) (toll free in USA), or 1(312) 455-8498 (outside USA) E: proteintech@ptglab.com
W: ptglab.com

This product is exclusively available under Proteintech Group brand and is not available to purchase from any other manufacturer.

Selected Validation Data



Jurkat cells were subjected to SDS PAGE followed by western blot with 15612-1-AP (KLHL13 antibody) at dilution of 1:500 incubated at room temperature for 1.5 hours.