

For Research Use Only

# RPS16 Polyclonal antibody

Catalog Number: 15603-1-AP **2 Publications**



## Basic Information

|  |  |   |
|--|--|---|
| <b>Catalog Number:</b><br>15603-1-AP   | <b>GenBank Accession Number:</b><br>BC004324 | <b>Purification Method:</b><br>Antigen affinity purification                        |
| <b>Size:</b><br>150ul , Concentration: 260 µg/ml by Nanodrop and 187 µg/ml by Bradford method using BSA as the standard; | <b>GeneID (NCBI):</b><br>6217                | <b>Recommended Dilutions:</b><br>WB 1:500-1:1000<br>IHC 1:20-1:200<br>IF 1:10-1:100 |
| <b>Source:</b><br>Rabbit   | <b>Full Name:</b><br>ribosomal protein S16   |   |
| <b>Isotype:</b><br>IgG   | <b>Calculated MW:</b><br>16 kDa              |   |
| <b>Immunogen Catalog Number:</b><br>AG7986   | <b>Observed MW:</b><br>16 kDa                |   |

## Applications

|  |  |
|--|--|
| <b>Tested Applications:</b><br>IF, IHC, WB, ELISA  | <b>Positive Controls:</b><br>WB : HeLa cells, Jurkat cells<br>IHC : human breast cancer tissue,<br>IF : MCF-7 cells, |
| <b>Cited Applications:</b><br>IHC, WB  |  |
| <b>Species Specificity:</b><br>human, mouse  |  |
| <b>Cited Species:</b><br>human   |  |
| <b>Note-IHC: suggested antigen retrieval with TE buffer pH 9.0; (*) Alternatively, antigen retrieval may be performed with citrate buffer pH 6.0</b> |  |

## Background Information

RPS16, the 40S ribosomal protein S16, belongs to the ribosomal protein S9P family. It is located in the cytoplasm and can be acetylated. RPS16 is extensively involved in rRNA processing, translational elongation, initiation and termination via its RNA binding activity. Catalog# 15603-1-AP is a rabbit polyclonal antibody raised against full-length RPS16 of human origin.

## Notable Publications

| Author      | Pubmed ID | Journal              | Application |
|-------------|-----------|----------------------|-------------|
| Lida Suo    | 37956648  | Int J Biol Markers   | IHC         |
| Huang Rui R | 22821915  | Proteomics Clin Appl | WB          |

## Storage

**Storage:**  
Store at -20°C. Stable for one year after shipment.  
**Storage Buffer:**  
PBS with 0.02% sodium azide and 50% glycerol pH 7.3.  
Aliquoting is unnecessary for -20°C storage

\*\*\* 20ul sizes contain 0.1% BSA

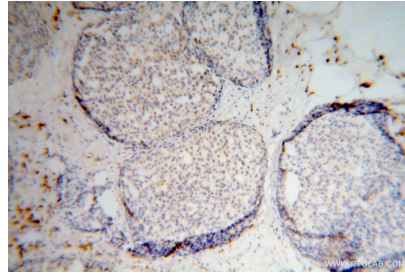
For technical support and original validation data for this product please contact:  
T: 1 (888) 4PTGLAB (1-888-478-4522) (toll free in USA), or 1(312) 455-8498 (outside USA)  
E: proteintech@ptglab.com  
W: ptglab.com

This product is exclusively available under Proteintech Group brand and is not available to purchase from any other manufacturer.

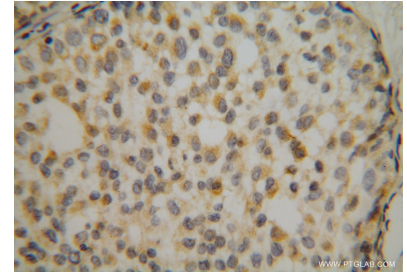
## Selected Validation Data



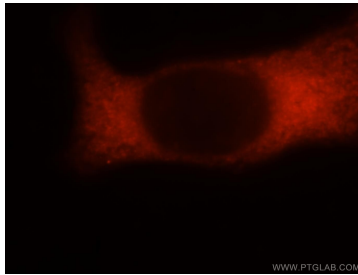
HeLa cells were subjected to SDS PAGE followed by western blot with 15603-1-AP (RPS16 antibody) at dilution of 1:500 incubated at room temperature for 1.5 hours.



Immunohistochemical analysis of paraffin-embedded human breast cancer using 15603-1-AP (RPS16 antibody) at dilution of 1:50 (under 10x lens).



Immunohistochemical analysis of paraffin-embedded human breast cancer using 15603-1-AP (RPS16 antibody) at dilution of 1:50 (under 40x lens).



Immunofluorescent analysis of MCF-7 cells, using RPS16 antibody 15603-1-AP at 1:25 dilution and Rhodamine-labeled goat anti-rabbit IgG (red).