

For Research Use Only

PSMG3 Polyclonal antibody

Catalog Number: 15601-1-AP



Basic Information

Catalog Number: 15601-1-AP	GenBank Accession Number: BC004308	Purification Method: Antigen affinity purification
Size: 150ul , Concentration: 260 µg/ml by Nanodrop and 227 µg/ml by Bradford method using BSA as the standard;	GeneID (NCBI): 84262	Recommended Dilutions: WB 1:500-1:2000 IHC 1:20-1:200
Source: Rabbit	Full Name: proteasome (prosome, macropain) assembly chaperone 3	
Isotype: IgG	Calculated MW: 13 kDa	
Immunogen Catalog Number: AG7984	Observed MW: 13-18 kDa	

Applications

Tested Applications:

IHC, WB, ELISA

Species Specificity:

human

Note-IHC: suggested antigen retrieval with TE buffer pH 9.0; (*) Alternatively, antigen retrieval may be performed with citrate buffer pH 6.0

Positive Controls:

WB : HEK-293 cells, HeLa cells, Jurkat cells, K-562 cells

IHC : human stomach cancer tissue, human liver cancer tissue

Background Information

PSMG3, also named as C7orf48 and PAC3, is a chaperone protein which promotes assembly of the 20S proteasome. It may cooperate with PSMG1-PSMG2 heterodimers to orchestrate the correct assembly of proteasomes.

Storage

Storage:

Store at -20°C. Stable for one year after shipment.

Storage Buffer:

PBS with 0.02% sodium azide and 50% glycerol pH 7.3.

Aliquoting is unnecessary for -20°C storage

*** 20ul sizes contain 0.1% BSA

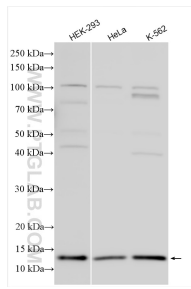
For technical support and original validation data for this product please contact:

T: 1 (888) 4PTGLAB (1-888-478-4522) (toll free in USA), or 1(312) 455-8498 (outside USA)

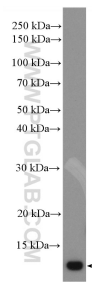
E: proteintech@ptglab.com
W: ptglab.com

This product is exclusively available under Proteintech Group brand and is not available to purchase from any other manufacturer.

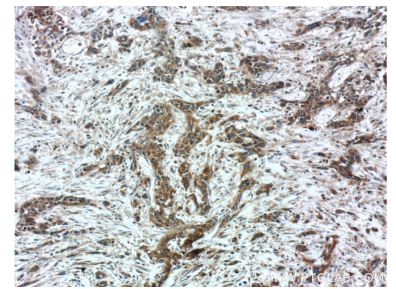
Selected Validation Data



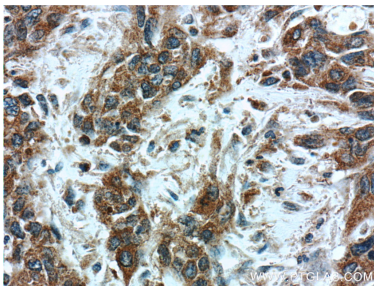
Various lysates were subjected to SDS PAGE followed by western blot with 15601-1-AP (PSMG3 antibody) at dilution of 1:1000 incubated at room temperature for 1.5 hours.



HeLa cells were subjected to SDS PAGE followed by western blot with 15601-1-AP (PSMG3 antibody) at dilution of 1:600 incubated at room temperature for 1.5 hours.



Immunohistochemical analysis of paraffin-embedded human stomach cancer tissue slide using 15601-1-AP (PSMG3 Antibody) at dilution of 1:50 (under 10x lens).



Immunohistochemical analysis of paraffin-embedded human stomach cancer tissue slide using 15601-1-AP (PSMG3 Antibody) at dilution of 1:50 (under 40x lens).