

For Research Use Only

KCTD2/5/17 Polyclonal antibody

Catalog Number: 15553-1-AP

Featured Product

7 Publications



Basic Information

Catalog Number: 15553-1-AP	GenBank Accession Number: BC007314	Purification Method: Antigen affinity purification
Size: 150ul, Concentration: 500 µg/ml by Nanodrop and 333 µg/ml by Bradford method using BSA as the standard;	GeneID (NCBI): 54442	Recommended Dilutions: WB 1:500-1:2000 IP 0.5-4.0 ug for IP and 1:500-1:1000 for WB
Source: Rabbit	Full Name: potassium channel tetramerisation domain containing 5	IHC 1:20-1:200 IF 1:10-1:100
Isotype: IgG	Calculated MW: 26 kDa	
Immunogen Catalog Number: AG7915	Observed MW: 26 kDa	

Applications

Tested Applications: FC, IF, IHC, IP, WB, ELISA	Positive Controls: WB : HeLa cells, human brain tissue
Cited Applications: IP, WB	IP : HeLa cells,
Species Specificity: human, mouse, rat	IHC : human ovary tumor tissue,
Cited Species: human, rat	IF : HeLa cells,

Note-IHC: suggested antigen retrieval with TE buffer pH 9.0; (*) Alternatively, antigen retrieval may be performed with citrate buffer pH 6.0

Background Information

KCTD5 belongs to the human potassium (K⁺) channel tetramerization domain (KCTD) family of proteins which share sequence similarity with the cytoplasmic domain of voltage-gated K⁺ channels (Kv channels). The KCTD proteins have relatively conserved N-terminal domains and variable C-termini (PMID: 24268103). KCTD5 interacts with cullin3 and has been proposed to function as substrate adapter for cullin3 based ubiquitin E3 ligases (PMID: 26188516). This polyclonal antibody raised against full-length recombinant protein of human KCTD5 (26 kDa) can cross-react with other KCTD proteins, including KCTD2 (29 kDa), KCTD17 (33-36 kDa).

Notable Publications

Author	Pubmed ID	Journal	Application
Hao Zeng	31741433	Elife	WB
Peipei Ding	35649359	Cell Rep	WB
Qiuling Li	28558011	PLoS Genet	WB

Storage

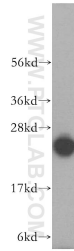
Storage:
Store at -20°C. Stable for one year after shipment.
Storage Buffer:
PBS with 0.02% sodium azide and 50% glycerol pH 7.3.
Aliquoting is unnecessary for -20°C storage

*** 20ul sizes contain 0.1% BSA

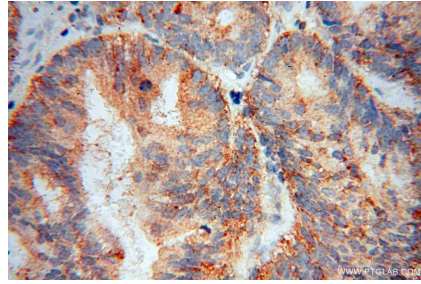
For technical support and original validation data for this product please contact:
T: 1 (888) 4PTGLAB (1-888-478-4522) (toll free in USA), or 1(312) 455-8498 (outside USA) E: proteintech@ptglab.com W: ptglab.com

This product is exclusively available under Proteintech Group brand and is not available to purchase from any other manufacturer.

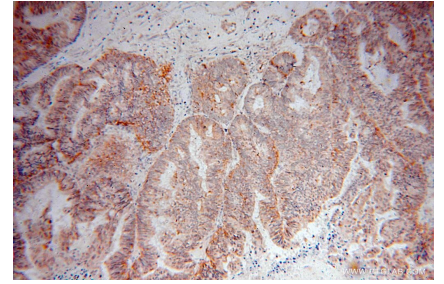
Selected Validation Data



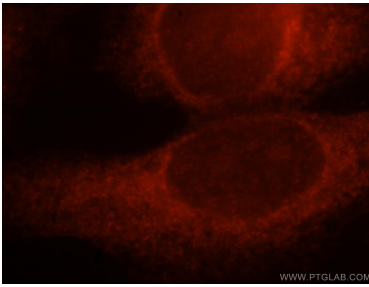
HeLa cells were subjected to SDS PAGE followed by western blot with 15553-1-AP (KCTD5 antibody) at dilution of 1:500 incubated at room temperature for 1.5 hours.



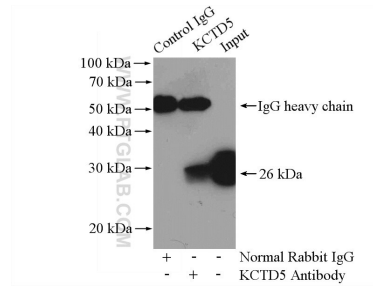
Immunohistochemical analysis of paraffin-embedded human ovary tumor using 15553-1-AP (KCTD5 antibody) at dilution of 1:50 (under 40x lens).



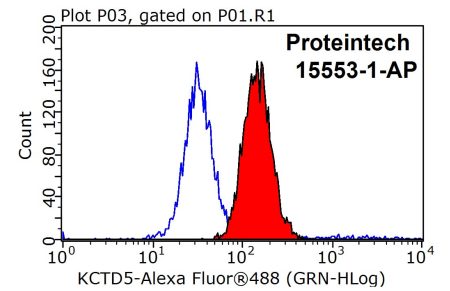
Immunohistochemical analysis of paraffin-embedded human ovary tumor using 15553-1-AP (KCTD5 antibody) at dilution of 1:50 (under 10x lens).



Immunofluorescent analysis of HeLa cells, using KCTD5 antibody 15553-1-AP at 1:25 dilution and Rhodamine-labeled goat anti-rabbit IgG (red).



IP Result of anti-KCTD5 (IP:15553-1-AP, 4ug; Detection:15553-1-AP 1:500) with HeLa cells lysate 1200ug.



1X10⁶ HeLa cells were stained with 0.2ug KCTD5 antibody (15553-1-AP, red) and control antibody (blue). Fixed with 90% MeOH blocked with 3% BSA (30 min). Alexa Fluor 488-conjugated AffiniPure Goat Anti-Rabbit IgG(H+L) with dilution 1:1000.