

For Research Use Only

SMU1 Polyclonal antibody

Catalog Number: 15511-1-AP



Basic Information

Catalog Number:

15511-1-AP

Size:

150ul, Concentration: 240 ug/ml by Nanodrop and 207 ug/ml by Bradford method using BSA as the standard;

Source:

Rabbit

Isotype:

IgG

Immunogen Catalog Number:

AG7688

GenBank Accession Number:

BC002876

GeneID (NCBI):

55234

UNIPROT ID:

Q2TAY7

Full Name:

smu-1 suppressor of mec-8 and unc-52 homolog (C. elegans)

Calculated MW:

58 kDa

Observed MW:

45-50 kDa

Purification Method:

Antigen affinity purification

Recommended Dilutions:

WB 1:500-1:1000

IHC 1:20-1:200

IF/ICC 1:10-1:100

Applications

Tested Applications:

WB, IHC, IF/ICC, ELISA

Species Specificity:

human, mouse, rat

Note-IHC: suggested antigen retrieval with TE buffer pH 9.0; (*) Alternatively, antigen retrieval may be performed with citrate buffer pH 6.0

Positive Controls:

WB: mouse liver tissue, K-562 cells

IHC: human kidney tissue, human brain tissue, human hepatocirrhosis tissue, human ovary tissue, human testis tissue

IF/ICC: HepG2 cells,

Background Information

Sum1, belongs to the WD repeat SMU1 family. Human SMU1 is a component of the spliceosome fSAP57(PMID: 15254247). It is possible that the mutation in Smu1 affects spliceosome function, resulting in generation of improper splice variants, which could explain the phenotypes of tsTM18 cells. Some results suggest that Smu1 participates in at least two steps of splicing: splice-site choice and control of accuracy(PMID: 17105761). This antibody is a rabbit polyclonal antibody raised against a region of human REDD1 antigen.

Storage

Storage:

Store at -20°C. Stable for one year after shipment.

Storage Buffer:

PBS with 0.02% sodium azide and 50% glycerol pH 7.3.

Aliquoting is unnecessary for -20°C storage

*** 20ul sizes contain 0.1% BSA

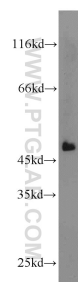
For technical support and original validation data for this product please contact:

T: 1 (888) 4PTGLAB (1-888-478-4522) (toll free in USA), or 1(312) 455-8498 (outside USA)

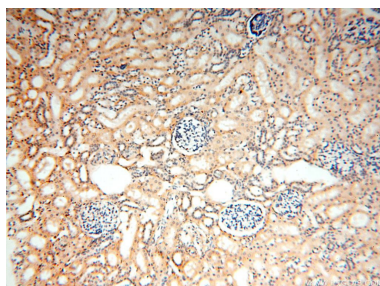
E: proteintech@ptglab.com
W: ptglab.com

This product is exclusively available under Proteintech Group brand and is not available to purchase from any other manufacturer.

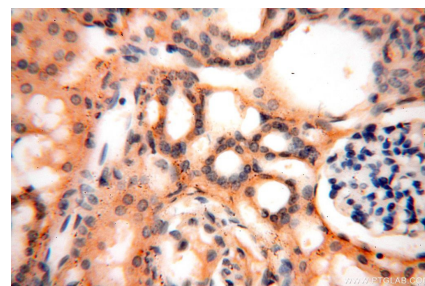
Selected Validation Data



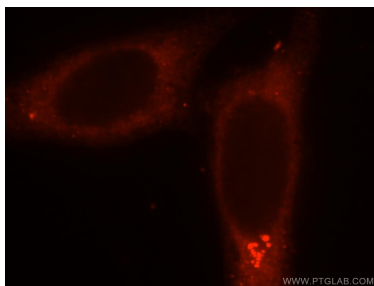
mouse liver tissue were subjected to SDS PAGE followed by western blot with 15511-1-AP (SMU1 antibody) at dilution of 1:1000 incubated at room temperature for 1.5 hours.



Immunohistochemical analysis of paraffin-embedded human kidney using 15511-1-AP (SMU1 antibody) at dilution of 1:100 (under 10x lens).



Immunohistochemical analysis of paraffin-embedded human kidney using 15511-1-AP (SMU1 antibody) at dilution of 1:100 (under 40x lens).



Immunofluorescent analysis of HepG2 cells, using SMU1 antibody 15511-1-AP at 1:25 dilution and Rhodamine-labeled goat anti-rabbit IgG (red).