

For Research Use Only

LIMD2 Polyclonal antibody

Catalog Number: 15471-1-AP **2 Publications**



Basic Information

Catalog Number: 15471-1-AP	GenBank Accession Number: BC004400	Purification Method: Antigen affinity purification
Size: 150ul , Concentration: 300 µg/ml by Nanodrop and 267 µg/ml by Bradford method using BSA as the standard;	GeneID (NCBI): 80774	Recommended Dilutions: WB 1:200-1:1000 IHC 1:20-1:200
Source: Rabbit	Full Name: LIM domain containing 2	
Isotype: IgG	Calculated MW: 14 kDa	
Immunogen Catalog Number: AG7775	Observed MW: 16-20 kDa	

Applications

Tested Applications: IHC, WB, ELISA	Positive Controls: WB : U-937 cells, Raji cells
Cited Applications: IF, WB	IHC : human liver cancer tissue, human brain tissue
Species Specificity: human, mouse, rat	
Cited Species: human	
Note-IHC: suggested antigen retrieval with TE buffer pH 9.0; (*) Alternatively, antigen retrieval may be performed with citrate buffer pH 6.0	

Background Information

Notable Publications

Author	Pubmed ID	Journal	Application
Lixin Chen	34724866	Bioengineered	IF
Haiyang Hu	37716918	Mol Biol Rep	WB

Storage

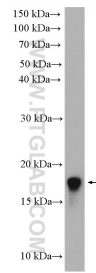
Storage:
Store at -20°C. Stable for one year after shipment.
Storage Buffer:
PBS with 0.02% sodium azide and 50% glycerol pH 7.3.
Aliquoting is unnecessary for -20°C storage

*** 20ul sizes contain 0.1% BSA

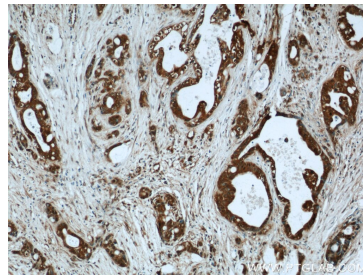
For technical support and original validation data for this product please contact:
T: 1 (888) 4PTGLAB (1-888-478-4522) (toll free in USA), or 1(312) 455-8498 (outside USA)
E: proteintech@ptglab.com
W: ptglab.com

This product is exclusively available under Proteintech Group brand and is not available to purchase from any other manufacturer.

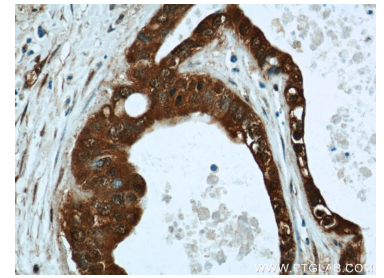
Selected Validation Data



U-937 cells were subjected to SDS PAGE followed by western blot with 15471-1-AP (LIMD2 antibody) at dilution of 1:300 incubated at room temperature for 1.5 hours.



Immunohistochemical analysis of paraffin-embedded human liver cancer using 15471-1-AP (LIMD2 antibody) at dilution of 1:50 (under 10x lens).



Immunohistochemical analysis of paraffin-embedded human liver cancer using 15471-1-AP (LIMD2 antibody) at dilution of 1:50 (under 40x lens).