

For Research Use Only

SIN1 Polyclonal antibody

Catalog Number: 15463-1-AP **5 Publications**



Basic Information

Catalog Number: 15463-1-AP	GenBank Accession Number: BC002326	Purification Method: Antigen affinity purification
Size: 150ul , Concentration: 600 µg/ml by Nanodrop;	GeneID (NCBI): 79109	Recommended Dilutions: WB 1:500-1:2000 IP 0.5-4.0 ug for IP and 0.5-4.0 ug for 1.0-3.0 mg of total protein lysate for WB IHC 1:50-1:500 IF 1:50-1:500
Source: Rabbit	Full Name: mitogen-activated protein kinase associated protein 1	
Isotype: IgG	Calculated MW: 59 kDa	
Immunogen Catalog Number: AG7753	Observed MW: 65 kDa	

Applications

Tested Applications: IF, IHC, IP, WB, ELISA	Positive Controls: WB : mouse kidney tissue, HeLa cells IP : mouse kidney tissue, IHC : mouse kidney tissue, human kidney tissue IF : HepG2 cells,
Cited Applications: IF, WB	
Species Specificity: human, mouse, rat	
Cited Species: human, mouse	

Note-IHC: suggested antigen retrieval with TE buffer pH 9.0; (*) Alternatively, antigen retrieval may be performed with citrate buffer pH 6.0

Background Information

Notable Publications

Author	Pubmed ID	Journal	Application
Qing Dai	36302989	Nat Biotechnol	WB
Joanna R Kovalski	30639242	Mol Cell	WB
Marco Di Gioia	38045410	bioRxiv	WB

Storage

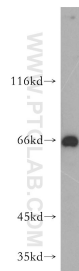
Storage:
Store at -20°C. Stable for one year after shipment.
Storage Buffer:
PBS with 0.02% sodium azide and 50% glycerol pH 7.3.
Aliquoting is unnecessary for -20°C storage

*** 20ul sizes contain 0.1% BSA

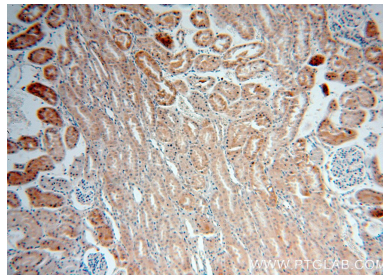
For technical support and original validation data for this product please contact:
T: 1 (888) 4PTGLAB (1-888-478-4522) (toll free in USA), or 1(312) 455-8498 (outside USA)
E: proteintech@ptglab.com
W: ptglab.com

This product is exclusively available under Proteintech Group brand and is not available to purchase from any other manufacturer.

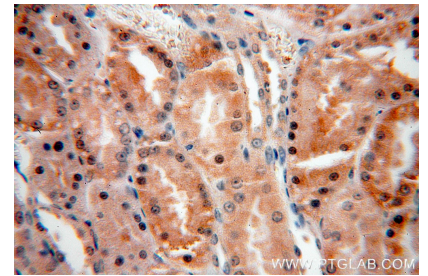
Selected Validation Data



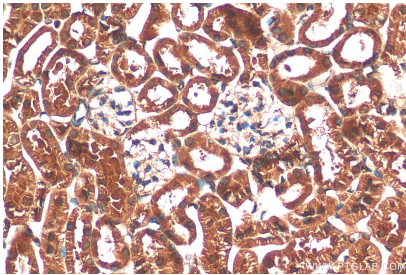
mouse kidney tissue were subjected to SDS PAGE followed by western blot with 15463-1-AP (MAPKAP1 antibody) at dilution of 1:500 incubated at room temperature for 1.5 hours.



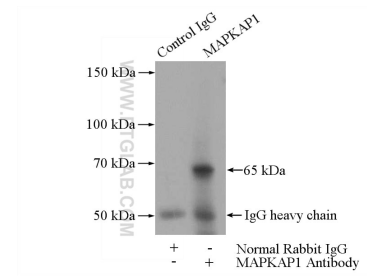
Immunohistochemical analysis of paraffin-embedded human kidney using 15463-1-AP (MAPKAP1 antibody) at dilution of 1:100 (under 10x lens).



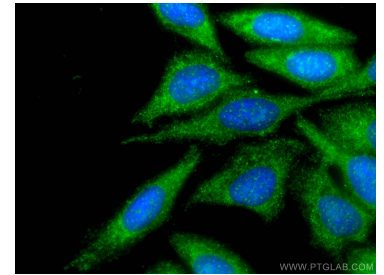
Immunohistochemical analysis of paraffin-embedded human kidney using 15463-1-AP (MAPKAP1 antibody) at dilution of 1:100 (under 40x lens).



Immunohistochemical analysis of paraffin-embedded mouse kidney tissue slide using 15463-1-AP (SIN1 antibody) at dilution of 1:200 (under 40x lens).



IP Result of anti-MAPKAP1 (IP:15463-1-AP, 4 μ g; Detection:15463-1-AP 1:500) with mouse kidney tissue lysate 4000 μ g.



Immunofluorescent analysis of (-20°C Ethanol) fixed HepG2 cells using MAPKAP1 antibody (15463-1-AP) at dilution of 1:200 and CoraLite®488-Conjugated AffiniPure Goat Anti-Rabbit IgG(H+L).