

For Research Use Only

# RPP25 Polyclonal antibody

Catalog Number: 15461-1-AP **1 Publications**



## Basic Information

<b>Catalog Number:</b> 15461-1-AP	<b>GenBank Accession Number:</b> BC002497	<b>Purification Method:</b> Antigen affinity purification
<b>Size:</b> 150ul , Concentration: 350 µg/ml by Nanodrop and 253 µg/ml by Bradford method using BSA as the standard;	<b>GeneID (NCBI):</b> 54913	<b>Recommended Dilutions:</b> WB 1:200-1:1000 IP 0.5-4.0 ug for IP and 1:200-1:1000 for WB
<b>Source:</b> Rabbit	<b>Full Name:</b> ribonuclease P/MRP 25kDa subunit	<b>IHC 1:20-1:200</b> <b>IF 1:50-1:500</b>
<b>Isotype:</b> IgG	<b>Calculated MW:</b> 21 kDa	
<b>Immunogen Catalog Number:</b> AG7742	<b>Observed MW:</b> 25 kDa	

## Applications

<b>Tested Applications:</b> IF, IHC, IP, WB, ELISA	<b>Positive Controls:</b> WB : HeLa cells, MCF-7 cells
<b>Cited Applications:</b> WB	<b>IP:</b> HeLa cells,
<b>Species Specificity:</b> human, mouse, rat	<b>IHC:</b> human small intestine tissue, human cervical cancer tissue
<b>Cited Species:</b> human	<b>IF:</b> HeLa cells,

**Note-IHC: suggested antigen retrieval with TE buffer pH 9.0; (\*) Alternatively, antigen retrieval may be performed with citrate buffer pH 6.0**

## Background Information

Ribonuclease P protein subunit p25(RPP25) is a component of ribonuclease P, which is a protein complex that generates mature tRNA molecular by cleaving their 5'-ends. It belongs to histone-like Alba family, also a component of RNase MRP. This subunit binds to RNA.

## Notable Publications

Author	Pubmed ID	Journal	Application
Ok Hyun Park	30930054	Mol Cell	WB

## Storage

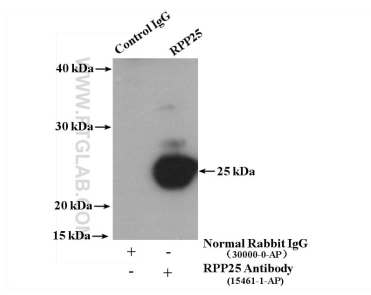
**Storage:**  
Store at -20°C. Stable for one year after shipment.  
**Storage Buffer:**  
PBS with 0.02% sodium azide and 50% glycerol pH 7.3.  
Aliquoting is unnecessary for -20°C storage

**\*\*\* 20ul sizes contain 0.1% BSA**

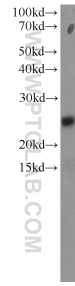
For technical support and original validation data for this product please contact:  
T: 1 (888) 4PTGLAB (1-888-478-4522) (toll free in USA), or 1(312) 455-8498 (outside USA)  
E: proteintech@ptglab.com  
W: ptglab.com

**This product is exclusively available under Proteintech Group brand and is not available to purchase from any other manufacturer.**

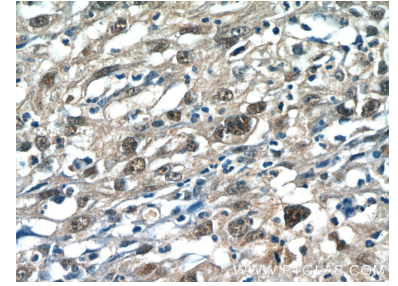
## Selected Validation Data



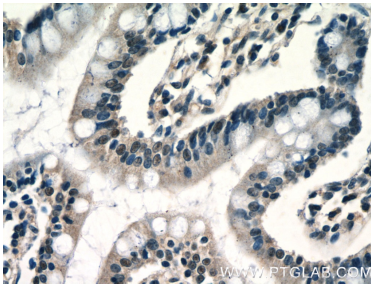
IP result of anti-RPP25 (IP:15461-1-AP, 4ug; Detection:15461-1-AP 1:300) with HeLa cells lysate 2800 ug.



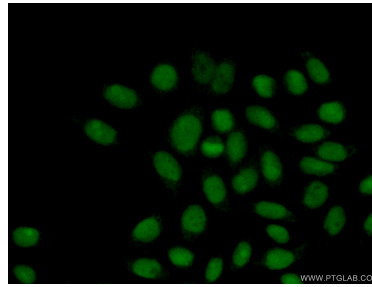
HeLa cells were subjected to SDS PAGE followed by western blot with 15461-1-AP (RPP25 antibody) at dilution of 1:300 incubated at room temperature for 1.5 hours.



Immunohistochemical analysis of paraffin-embedded human cervical cancer tissue slide using 15461-1-AP (RPP25 Antibody) at dilution of 1:50 (under 40x lens).



Immunohistochemical analysis of paraffin-embedded human small intestine tissue slide using 15461-1-AP (RPP25 Antibody) at dilution of 1:50 (under 40x lens).



Immunofluorescent analysis of (10% Formaldehyde) fixed HeLa cells using 15461-1-AP (RPP25 antibody) at dilution of 1:50 and Alexa Fluor 488-conjugated AffiniPure Goat Anti-Rabbit IgG(H+L).