

For Research Use Only

# BRCC3 Polyclonal antibody

Catalog Number: 15391-1-AP **3 Publications**



## Basic Information

<b>Catalog Number:</b> 15391-1-AP	<b>GenBank Accession Number:</b> BC002999	<b>Purification Method:</b> Antigen affinity purification
<b>Size:</b> 150ul , Concentration: 800 µg/ml by Nanodrop;	<b>GeneID (NCBI):</b> 79184	<b>Recommended Dilutions:</b> WB 1:1000-1:6000 IHC 1:50-1:500
<b>Source:</b> Rabbit	<b>Full Name:</b> BRCA1/BRCA2-containing complex, subunit 3	
<b>Isotype:</b> IgG	<b>Calculated MW:</b> 36 kDa	
<b>Immunogen Catalog Number:</b> AG7584	<b>Observed MW:</b> 35 kDa	

## Applications

<b>Tested Applications:</b> IHC, WB, ELISA	<b>Positive Controls:</b> WB : HeLa cells, PC-3 cells
<b>Cited Applications:</b> CoIP, IHC, WB	<b>IHC :</b> human nasopharyngeal carcinoma tissue,
<b>Species Specificity:</b> human, mouse, rat	
<b>Cited Species:</b> human, mouse, pig	

**Note-IHC: suggested antigen retrieval with TE buffer pH 9.0; (\*) Alternatively, antigen retrieval may be performed with citrate buffer pH 6.0**

## Background Information

BRCA1-BRCA2-containing complex subunit 3 (BRCC3), a Lys-63-specific deubiquitinase, is a member of the JAMM/MPN family of zinc metalloproteases. BRCC3 have been shown to promote the inflammasome activation by deubiquitinating NOD-like receptor containing pyrin domain 3 (NLRP3). BRCC3 is associated with G2/M arrest in breast cancer cells and DNA damage. The expression of BRCC3 is associated with increased cell proliferation. (PMID: 23246432, PMID: 30272359)

## Notable Publications

Author	Pubmed ID	Journal	Application
Nitchakarn Kaokhum	36182100	Mol Cell Proteomics	WB
Liping Xie	38240727	J Agric Food Chem	WB,CoIP
Jiahao Zhang	37734237	Transl Oncol	IHC

## Storage

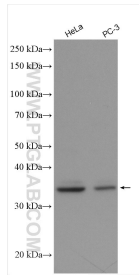
**Storage:**  
Store at -20°C. Stable for one year after shipment.  
**Storage Buffer:**  
PBS with 0.02% sodium azide and 50% glycerol pH 7.3.  
Aliquoting is unnecessary for -20°C storage

\*\*\* 20ul sizes contain 0.1% BSA

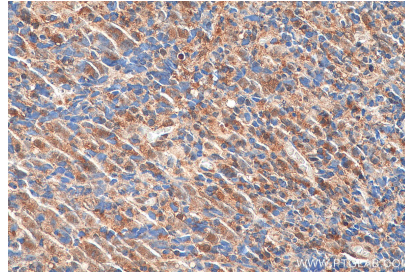
For technical support and original validation data for this product please contact:  
T: 1 (888) 4PTGLAB (1-888-478-4522) (toll free in USA), or 1(312) 455-8498 (outside USA)  
E: proteintech@ptglab.com  
W: ptglab.com

This product is exclusively available under Proteintech Group brand and is not available to purchase from any other manufacturer.

## Selected Validation Data



Various lysates were subjected to SDS PAGE followed by western blot with 15391-1-AP (BRCC3 antibody) at dilution of 1:3000 incubated at room temperature for 1.5 hours.



Immunohistochemical analysis of paraffin-embedded human nasopharyngeal carcinoma tissue slide using 15391-1-AP (BRCC3 antibody) at dilution of 1:200 (under 40x lens). Heat mediated antigen retrieval with Tris-EDTA buffer (pH 9.0).