

For Research Use Only

MRPL9 Polyclonal antibody

Catalog Number: 15342-1-AP **4 Publications**



Basic Information

Catalog Number: 15342-1-AP	GenBank Accession Number: BC004517	Purification Method: Antigen affinity purification
Size: 150ul , Concentration: 260 µg/ml by Nanodrop and 207 µg/ml by Bradford method using BSA as the standard;	GeneID (NCBI): 65005	Recommended Dilutions: WB 1:500-1:2000 IHC 1:50-1:500 IF 1:50-1:500
Source: Rabbit	Full Name: mitochondrial ribosomal protein L9	
Isotype: IgG	Calculated MW: 30 kDa	
Immunogen Catalog Number: AG7545	Observed MW: 26-28 kDa	

Applications

Tested Applications: IF, IHC, WB, ELISA	Positive Controls: WB : HeLa cells, HepG2 cells, MCF-7 cells, PC-3 cells
Cited Applications: CoIP, IF, IHC, WB	IHC : human breast cancer tissue,
Species Specificity: human, mouse, rat	IF : MCF-7 cells,
Cited Species: human	

Note-IHC: suggested antigen retrieval with TE buffer pH 9.0; (*) Alternatively, antigen retrieval may be performed with citrate buffer pH 6.0

Background Information

Notable Publications

Author	Pubmed ID	Journal	Application
Hui-Min Zhang	36233293	Int J Mol Sci	WB, IHC, IF, CoIP
Cong Xie	36684217	Front Surg	WB
Shabnam Bakhshalizadeh	37148394	Hum Genet	WB

Storage

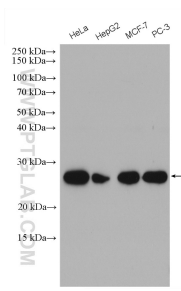
Storage:
Store at -20°C. Stable for one year after shipment.
Storage Buffer:
PBS with 0.02% sodium azide and 50% glycerol pH 7.3.
Aliquoting is unnecessary for -20°C storage

***** 20ul sizes contain 0.1% BSA**

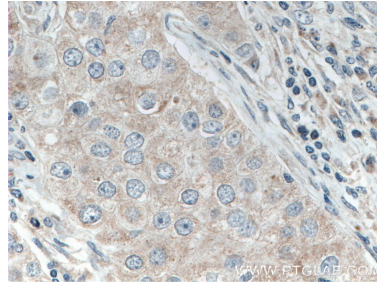
For technical support and original validation data for this product please contact:
T: 1 (888) 4PTGLAB (1-888-478-4522) (toll free in USA), or 1(312) 455-8498 (outside USA)
E: proteintech@ptglab.com
W: ptglab.com

This product is exclusively available under Proteintech Group brand and is not available to purchase from any other manufacturer.

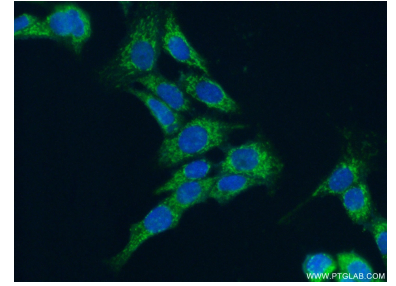
Selected Validation Data



Various lysates were subjected to SDS PAGE followed by western blot with 15342-1-AP (MRPL9 antibody) at dilution of 1:1000 incubated at room temperature for 1.5 hours.



Immunohistochemical analysis of paraffin-embedded human breast cancer tissue slide using 15342-1-AP (MRPL9 antibody) at dilution of 1:200 (under 40x lens. Heat mediated antigen retrieval with Tris-EDTA buffer (pH 9.0).



Immunofluorescent analysis of (4% PFA) fixed MCF-7 cells using 15342-1-AP (MRPL9 antibody) at dilution of 1:50 and Alexa Fluor 488-conjugated AffiniPure Goat Anti-Rabbit IgG(H+L).