

For Research Use Only

RRAGD Polyclonal antibody

Catalog Number: 15315-1-AP



Basic Information

Catalog Number:

15315-1-AP

Size:

150ul , Concentration: 270 µg/ml by Nanodrop;

Source:

Rabbit

Isotype:

IgG

Immunogen Catalog Number:

AG7557

GenBank Accession Number:

BC003088

GeneID (NCBI):

58528

UNIPROT ID:

Q9NQL2

Full Name:

Ras-related GTP binding D

Calculated MW:

46 kDa

Observed MW:

46-50 kDa

Purification Method:

Antigen affinity purification

Recommended Dilutions:

WB 1:500-1:1000

IP 0.5-4.0 ug for 1.0-3.0 mg of total protein lysate

Applications

Tested Applications:

IP, WB, ELISA

Species Specificity:

human, mouse, rat

Positive Controls:

WB : NIH/3T3 cells, mouse skeletal muscle tissue, rat skeletal muscle tissue

IP : NIH/3T3 cells,

Background Information

Ras-related GTP-binding protein D (RRAGD) is a monomeric GTP or GDP binding protein, which plays a critical role in mediating amino acid stimulated mTOR signaling pathway, a key pathway in determination of cell growth and proliferation rate. Recently, RRAGD has been reported involving the progression of ovarian cancer and colon cancer.

Storage

Storage:

Store at -20°C. Stable for one year after shipment.

Storage Buffer:

PBS with 0.02% sodium azide and 50% glycerol pH 7.3.

Aliquoting is unnecessary for -20°C storage

*** 20ul sizes contain 0.1% BSA

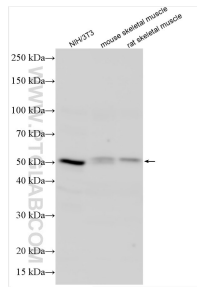
For technical support and original validation data for this product please contact:

T: 1 (888) 4PTGLAB (1-888-478-4522) (toll free in USA), or 1(312) 455-8498 (outside USA)

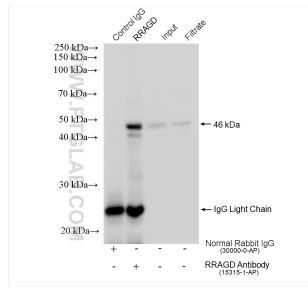
E: proteintech@ptglab.com
W: ptglab.com

This product is exclusively available under Proteintech Group brand and is not available to purchase from any other manufacturer.

Selected Validation Data



Various lysates were subjected to SDS PAGE followed by western blot with 15315-1-AP (RRAGD antibody) at dilution of 1:500 incubated at room temperature for 1.5 hours.



IP result of anti- RRAGD (IP:15315-1-AP, 4ug; Detection:15315-1-AP 1:500) with NIH/3T3 cells lysate 1120 ug.