

For Research Use Only

# MRPS25 Polyclonal antibody

Catalog Number: 15277-1-AP

Featured Product

5 Publications



## Basic Information

**Catalog Number:**  
15277-1-AP

**Size:**  
150ul, Concentration: 500 µg/ml by Nanodrop and 333 µg/ml by Bradford method using BSA as the standard;

**Source:**  
Rabbit

**Isotype:**  
IgG

**Immunogen Catalog Number:**  
AG7395

**GenBank Accession Number:**  
BC003590

**GeneID (NCBI):**  
64432

**Full Name:**  
mitochondrial ribosomal protein S25

**Calculated MW:**  
20 kDa

**Observed MW:**  
20 kDa

**Purification Method:**  
Antigen affinity purification

**Recommended Dilutions:**  
WB 1:500-1:2000  
IP 0.5-4.0 ug for IP and 1:500-1:1000 for WB

## Applications

**Tested Applications:**  
IP, WB, ELISA

**Cited Applications:**  
IP, WB

**Species Specificity:**  
human, mouse, rat

**Cited Species:**  
human, mouse

**Positive Controls:**

**WB:** HEK-293 cells, HepG2 cells

**IP:** HEK-293 cells,

## Background Information

Mitochondrial ribosomal protein S25 (MRPS25) belongs to the ribosomal protein S25/L51 family. It is a component of the mitochondrial ribosome small subunit (28S). The variant segregated with the disease and substitutes a highly conserved proline residue with leucine (p.P72L) that, based on the high-resolution structure of the 28S ribosome, is predicted to compromise inter-protein contacts and destabilize the small subunit.

## Notable Publications

Author	Pubmed ID	Journal	Application
Benedetta Ruzzenente	33606205	Methods Mol Biol	WB
Tara R Richman	25816300	PLoS Genet	WB
Hui Zhong	37823603	Nucleic Acids Res	WB,IP

## Storage

**Storage:**

Store at -20°C. Stable for one year after shipment.

**Storage Buffer:**

PBS with 0.02% sodium azide and 50% glycerol pH 7.3.

Aliquoting is unnecessary for -20°C storage

\*\*\* 20ul sizes contain 0.1% BSA

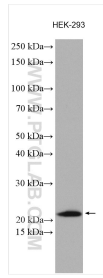
For technical support and original validation data for this product please contact:

T: 1 (888) 4PTGLAB (1-888-478-4522) (toll free in USA), or 1(312) 455-8498 (outside USA)

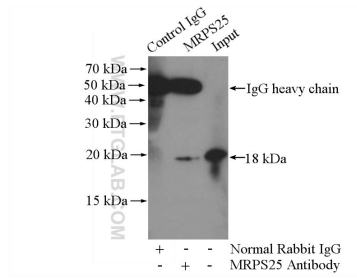
E: [proteintech@ptglab.com](mailto:proteintech@ptglab.com)  
W: [ptglab.com](http://ptglab.com)

This product is exclusively available under Proteintech Group brand and is not available to purchase from any other manufacturer.

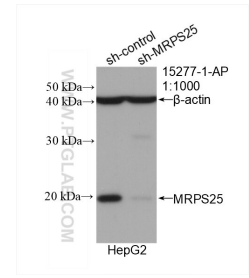
## Selected Validation Data



HEK-293 cells were subjected to SDS PAGE followed by western blot with 15277-1-AP (MRPS25 antibody) at dilution of 1:1000 incubated at room temperature for 1.5 hours.



IP Result of anti-MRPS25 (IP:15277-1-AP, 4 $\mu$ g; Detection:15277-1-AP 1:500) with HEK-293 cells lysate 1600 $\mu$ g.



WB result of MRPS25 antibody (15277-1-AP; 1:1000; incubated at room temperature for 1.5 hours) with sh-Control and sh-MRPS25 transfected HepG2 cells.