

For Research Use Only

PSMD13 Polyclonal antibody

Catalog Number: 15261-1-AP

Featured Product

4 Publications



Basic Information

Catalog Number: 15261-1-AP	GenBank Accession Number: BC001100	Purification Method: Antigen affinity purification
Size: 150ul, Concentration: 260 µg/ml by Nanodrop and 167 µg/ml by Bradford method using BSA as the standard;	GeneID (NCBI): 5719	Recommended Dilutions: WB 1:500-1:2000 IP 0.5-4.0 ug for IP and 1:500-1:2000 for WB
Source: Rabbit	Full Name: proteasome (prosome, macropain) 26S subunit, non-ATPase, 13	IHC 1:50-1:500 IF 1:10-1:100
Isotype: IgG	Calculated MW: 43 kDa	
Immunogen Catalog Number: AG7257	Observed MW: 43 kDa	

Applications

Tested Applications: IF, IHC, IP, WB, ELISA	Positive Controls:
Cited Applications: IHC, WB	WB: HEK-293 cells, HepG2 cells, HeLa cells, Jurkat cells, Y79 cells
Species Specificity: human	IP: HEK-293T cells,
Cited Species: mouse	IHC: human kidney tissue, human colon cancer tissue
	IF: HeLa cells,

Note-IHC: suggested antigen retrieval with TE buffer pH 9.0; (*) Alternatively, antigen retrieval may be performed with citrate buffer pH 6.0

Background Information

Notable Publications

Author	Pubmed ID	Journal	Application
Songhua Li	27225770	J Neurosci	WB
Songhua Li	24849605	J Biol Chem	WB,IHC
Jennifer E Gilda	37205440	bioRxiv	WB

Storage

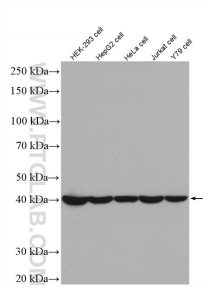
Storage:
Store at -20°C. Stable for one year after shipment.
Storage Buffer:
PBS with 0.02% sodium azide and 50% glycerol pH 7.3.
Aliquoting is unnecessary for -20°C storage

*** 20ul sizes contain 0.1% BSA

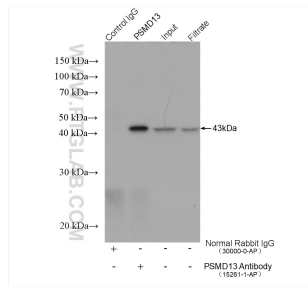
For technical support and original validation data for this product please contact:
T: 1 (888) 4PTGLAB (1-888-478-4522) (toll free in USA), or 1(312) 455-8498 (outside USA)
E: proteintech@ptglab.com
W: ptglab.com

This product is exclusively available under Proteintech Group brand and is not available to purchase from any other manufacturer.

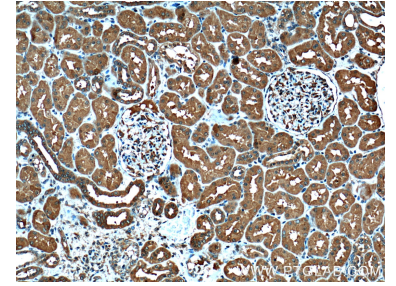
Selected Validation Data



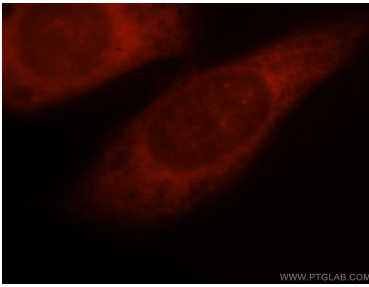
Various lysates were subjected to SDS PAGE followed by western blot with 15261-1-AP (PSMD13 antibody) at dilution of 1:1000 incubated at room temperature for 1.5 hours.



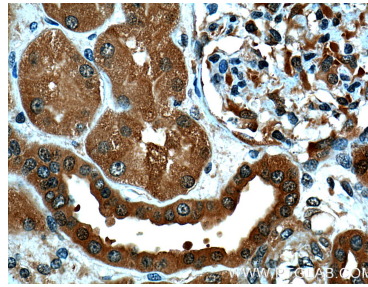
IP result of anti-PSMD13 (IP:15261-1-AP, 4ug; Detection:15261-1-AP 1:1000) with HEK-293T cells lysate 1200 ug.



Immunohistochemical analysis of paraffin-embedded human kidney tissue slide using 15261-1-AP (PSMD13 Antibody) at dilution of 1:200 (under 10x lens).



Immunofluorescent analysis of HeLa cells, using PSMD13 antibody 15261-1-AP at 1:25 dilution and Rhodamine-labeled goat anti-rabbit IgG (red).



Immunohistochemical analysis of paraffin-embedded human kidney tissue slide using 15261-1-AP (PSMD13 Antibody) at dilution of 1:200 (under 40x lens).