

For Research Use Only

GSG1 Polyclonal antibody

Catalog Number: 15258-1-AP



Basic Information

Catalog Number: 15258-1-AP	GenBank Accession Number: BC001796	Purification Method: Antigen affinity purification
Size: 150ul , Concentration: 450 µg/ml by Nanodrop;	GeneID (NCBI): 83445	Recommended Dilutions: WB 1:500-1:1000 IF 1:50-1:500
Source: Rabbit	Full Name: germ cell associated 1	
Isotype: IgG	Calculated MW: 37 kDa	
Immunogen Catalog Number: AG7200	Observed MW: 39 kDa	

Applications

Tested Applications: IF, WB, ELISA	Positive Controls: WB : mouse testis tissue, IF : mouse testis tissue,
Species Specificity: human, mouse	

Background Information

GSG1 causes the redistribution of PAPOLB from the cytosol to the endoplasmic reticulum. It has eight isoforms with MW 31-33 kDa and 36-40 kDa.

Storage

Storage:
Store at -20°C. Stable for one year after shipment.
Storage Buffer:
PBS with 0.02% sodium azide and 50% glycerol pH 7.3.
Aliquoting is unnecessary for -20°C storage

*** 20ul sizes contain 0.1% BSA

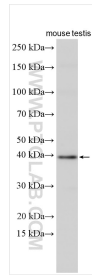
For technical support and original validation data for this product please contact:

T: 1 (888) 4PTGLAB (1-888-478-4522) (toll free in USA), or 1(312) 455-8498 (outside USA)

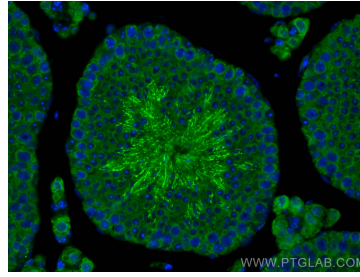
E: proteintech@ptglab.com
W: ptglab.com

This product is exclusively available under Proteintech Group brand and is not available to purchase from any other manufacturer.

Selected Validation Data



mouse testis tissue were subjected to SDS PAGE followed by western blot with 15258-1-AP (GSG1 antibody) at dilution of 1:800 incubated at room temperature for 1.5 hours.



Immunofluorescent analysis of (4% PFA) fixed mouse testis tissue using GSG1 antibody (15258-1-AP) at dilution of 1:200 and CoraLite® 488-Conjugated AffiniPure Goat Anti-Rabbit IgG(H+L).