

For Research Use Only

# GPR162 Polyclonal antibody

Catalog Number: 15254-1-AP



## Basic Information

|  |   |  |
|--|---|--|
| <b>Catalog Number:</b><br>15254-1-AP   | <b>GenBank Accession Number:</b><br>BC002353        | <b>Purification Method:</b><br>Antigen affinity purification |
| <b>Size:</b><br>150ul , Concentration: 350 µg/ml by Nanodrop and 253 µg/ml by Bradford method using BSA as the standard; | <b>GeneID (NCBI):</b><br>27239                      | <b>Recommended Dilutions:</b><br>WB 1:500-1:2000             |
| <b>Source:</b><br>Rabbit   | <b>Full Name:</b><br>G protein-coupled receptor 162 |  |
| <b>Isotype:</b><br>IgG   | <b>Calculated MW:</b><br>64 kDa                     |  |
| <b>Immunogen Catalog Number:</b><br>AG7011   | <b>Observed MW:</b><br>33 kDa, 64 kDa               |  |

## Applications

|   |  |
|---|--|
| <b>Tested Applications:</b><br>WB,ELISA | <b>Positive Controls:</b><br>WB : SH-SY5Y cells, HeLa cells, human brain tissue, Y79 cells |
| <b>Species Specificity:</b><br>human    |  |

## Background Information

### Storage

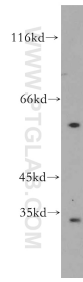
**Storage:**  
Store at -20°C. Stable for one year after shipment.  
**Storage Buffer:**  
PBS with 0.02% sodium azide and 50% glycerol pH 7.3.  
Aliquoting is unnecessary for -20°C storage

\*\*\* 20ul sizes contain 0.1% BSA

For technical support and original validation data for this product please contact:  
T: 1 (888) 4PTGLAB (1-888-478-4522) (toll free in USA), or 1(312) 455-8498 (outside USA)      E: proteintech@ptglab.com  
W: ptglab.com

This product is exclusively available under Proteintech Group brand and is not available to purchase from any other manufacturer.

## Selected Validation Data



SH-SY5Y cells were subjected to SDS PAGE followed by western blot with 15254-1-AP (GPR162 antibody) at dilution of 1:500 incubated at room temperature for 1.5 hours.