

For Research Use Only

SMPD2 Polyclonal antibody

Catalog Number: 15239-1-AP



Basic Information

Catalog Number: 15239-1-AP	GenBank Accession Number: BC000038	Purification Method: Antigen affinity purification
Size: 150ul , Concentration: 300 µg/ml by Nanodrop;	GeneID (NCBI): 6610	Recommended Dilutions: WB 1:500-1:1000
Source: Rabbit	Full Name: sphingomyelin phosphodiesterase 2, neutral membrane (neutral sphingomyelinase)	
Isotype: IgG	Calculated MW: 48 kDa	
Immunogen Catalog Number: AG7367	Observed MW: 48 kDa	

Applications

Tested Applications: WB, ELISA	Positive Controls: WB : mouse liver tissue,
Species Specificity: human, mouse	

Background Information

SMPD2, Sphingomyelin phosphodiesterase 2, is also named as Lyso-platelet-activating factor-phospholipase C and neutral sphingomyelinase (nSMase). It is involved in the sphingolipid metabolism pathway, which can catalyze the hydrolysis of sphingomyelin to form ceramide and phosphocholine. Smpd2/Smpd3 double-mutant mice were found to have severe retardation of late embryonic and postnatal growth and delayed puberty, belonging to hypothalamus-induced combined pituitary hormone deficiency (PubMed: 15764706).

Storage

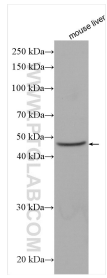
Storage:
Store at -20°C. Stable for one year after shipment.
Storage Buffer:
PBS with 0.02% sodium azide and 50% glycerol pH 7.3.
Aliquoting is unnecessary for -20°C storage

*** 20ul sizes contain 0.1% BSA

For technical support and original validation data for this product please contact:
T: 1 (888) 4PTGLAB (1-888-478-4522) (toll free in USA), or 1(312) 455-8498 (outside USA)
E: proteintech@ptglab.com
W: ptglab.com

This product is exclusively available under Proteintech Group brand and is not available to purchase from any other manufacturer.

Selected Validation Data



mouse liver tissue were subjected to SDS PAGE followed by western blot with 15239-1-AP (SMPD2 antibody) at dilution of 1:800 incubated at room temperature for 1.5 hours.