

For Research Use Only

PSMB2 Polyclonal antibody

Catalog Number: 15154-1-AP

Featured Product

6 Publications



Basic Information

Catalog Number: 15154-1-AP	GenBank Accession Number: BC000268	Purification Method: Antigen affinity purification
Size: 150ul, Concentration: 200 µg/ml by Nanodrop and 153 µg/ml by Bradford method using BSA as the standard;	GeneID (NCBI): 5690	Recommended Dilutions: WB 1:500-1:2000 IHC 1:20-1:200 IF 1:20-1:200
Source: Rabbit	UNIPROT ID: P49721	
Isotype: IgG	Full Name: proteasome (prosome, macropain) subunit, beta type, 2	
Immunogen Catalog Number: AG7198	Calculated MW: 23 kDa	
	Observed MW: 23 kDa	

Applications

Tested Applications:

IF, IHC, WB, ELISA

Cited Applications:

WB

Species Specificity:

human

Cited Species:

human, rat, mouse

Positive Controls:

WB : HEK-293T cells, HEK-293 cells, HeLa cells, Jurkat cells

IHC : human ovary tumor tissue,

IF : HepG2 cells,

Note-IHC: suggested antigen retrieval with TE buffer pH 9.0; (*) Alternatively, antigen retrieval may be performed with citrate buffer pH 6.0

Background Information

PSMB2, Proteasome subunit beta type-2, is also known as 20S proteasome subunit beta-4 (PMID: 7918633). The proteasome is responsible for degradation of short lived and misfolded cytosolic and nuclear proteins in the cell and cleaves peptides in an ATP/ubiquitin-dependent process in a non-lysosomal pathway. PSMB2 is up-regulated in ovarian cancer cell lines. The up-regulation of PSMB2 may indicate the activated neuronal defensive mechanism in VAD (vitamin A depletion) brain regions (PMID: 21190828). Knockdown of PSMB2 suppresses hepatocellular carcinoma and gastric cancer cell proliferation and invasion (PMID: 29780166, PMID: 36110152).

Notable Publications

Author	Pubmed ID	Journal	Application
Sheng Tan	29780166	Oncogene	WB
Chang-Xin Shi	32561655	Mol Cancer Res	WB
Xin Xie	32595507	Front Pharmacol	WB

Storage

Storage:

Store at -20°C. Stable for one year after shipment.

Storage Buffer:

PBS with 0.02% sodium azide and 50% glycerol pH 7.3.

Aliquoting is unnecessary for -20°C storage

*** 20ul sizes contain 0.1% BSA

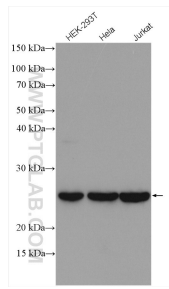
For technical support and original validation data for this product please contact:

T: 1 (888) 4PTGLAB (1-888-478-4522) (toll free in USA), or 1(312) 455-8498 (outside USA)

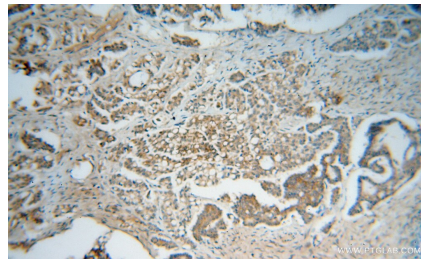
E: proteintech@ptglab.com
W: ptglab.com

This product is exclusively available under Proteintech Group brand and is not available to purchase from any other manufacturer.

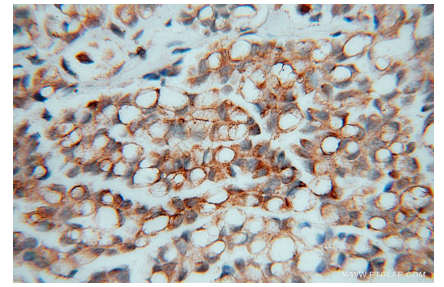
Selected Validation Data



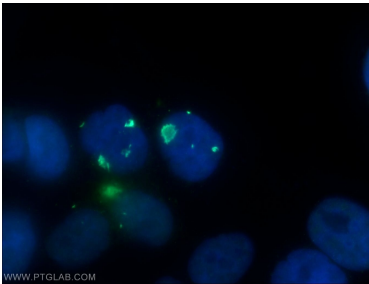
Various lysates were subjected to SDS PAGE followed by western blot with 15154-1-AP (PSMB2 antibody) at dilution of 1:1000 incubated at room temperature for 1.5 hours.



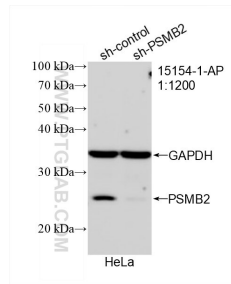
Immunohistochemical analysis of paraffin-embedded human ovary tumor using 15154-1-AP (PSMB2 antibody) at dilution of 1:50 (under 10x lens).



Immunohistochemical analysis of paraffin-embedded human ovary tumor using 15154-1-AP (PSMB2 antibody) at dilution of 1:50 (under 40x lens).



Immunofluorescent analysis of HepG2 cells using 15154-1-AP (PSMB2 antibody) at dilution of 1:50 and Alexa Fluor 488-conjugated AffiniPure Goat Anti-Rabbit IgG(H+L).



WB result of PSMB2 antibody (15154-1-AP; 1:1200; incubated at room temperature for 1.5 hours) with sh-Control and sh-PSMB2 transfected HeLa cells.