

For Research Use Only

PIGK Polyclonal antibody

Catalog Number: 15151-1-AP **2 Publications**



Basic Information

Catalog Number: 15151-1-AP	GenBank Accession Number: BC026186	Purification Method: Antigen affinity purification
Size: 150ul, Concentration: 300 µg/ml by Nanodrop and 173 µg/ml by Bradford method using BSA as the standard;	GeneID (NCBI): 10026	Recommended Dilutions: WB 1:500-1:2000 IHC 1:20-1:200
Source: Rabbit	Full Name: phosphatidylinositol glycan anchor biosynthesis, class K	
Isotype: IgG	Calculated MW: 45 kDa	
Immunogen Catalog Number: AG3497	Observed MW: 40-45 kDa	

Applications

Tested Applications: IHC, WB, ELISA	Positive Controls: WB : HT-1080 cells, SMMC-7721 cells, HepG2 cells
Cited Applications: WB	IHC : human ovary tumor tissue,
Species Specificity: human	
Cited Species: human, rat	

Note-IHC: suggested antigen retrieval with TE buffer pH 9.0; (*) Alternatively, antigen retrieval may be performed with citrate buffer pH 6.0

Background Information

Notable Publications

Author	Pubmed ID	Journal	Application
Mengyan Hu	37402721	Nat Commun	WB
Tiemei Li	37246283	Adv Sci (Weinh)	WB

Storage

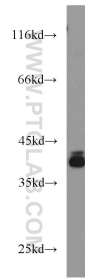
Storage:
Store at -20°C. Stable for one year after shipment.
Storage Buffer:
PBS with 0.02% sodium azide and 50% glycerol pH 7.3.
Aliquoting is unnecessary for -20°C storage

***** 20ul sizes contain 0.1% BSA**

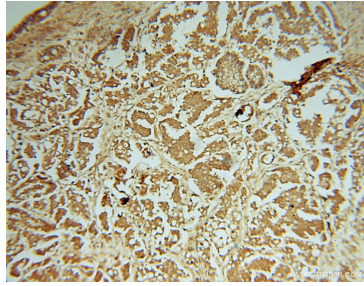
For technical support and original validation data for this product please contact:
T: 1 (888) 4PTGLAB (1-888-478-4522) (toll free in USA), or 1(312) 455-8498 (outside USA)
E: proteintech@ptglab.com
W: ptglab.com

This product is exclusively available under Proteintech Group brand and is not available to purchase from any other manufacturer.

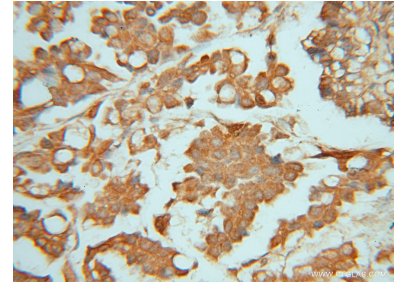
Selected Validation Data



HT-1080 cells were subjected to SDS PAGE followed by western blot with 15151-1-AP (PIGK antibody) at dilution of 1:1000 incubated at room temperature for 1.5 hours.



Immunohistochemical analysis of paraffin-embedded human ovary tumor using 15151-1-AP (PIGK antibody) at dilution of 1:50 (under 10x lens).



Immunohistochemical analysis of paraffin-embedded human ovary tumor using 15151-1-AP (PIGK antibody) at dilution of 1:50 (under 40x lens).