

For Research Use Only

RPL39 Polyclonal antibody

Catalog Number: 14990-1-AP

Featured Product

8 Publications



Basic Information

Catalog Number: 14990-1-AP	GenBank Accession Number: BC001019	Purification Method: Antigen affinity purification
Size: 150ul, Concentration: 550 µg/ml by Nanodrop;	GeneID (NCBI): 6170	Recommended Dilutions: WB 1:500-1:2000 IHC 1:20-1:200 IF 1:50-1:500
Source: Rabbit	Full Name: ribosomal protein L39	
Isotype: IgG	Calculated MW: 6 kDa	
Immunogen Catalog Number: AG6975	Observed MW: 6 kDa	

Applications

Tested Applications: IF, IHC, WB, ELISA	Positive Controls: WB : HepG2 cells, human liver tissue IHC : human liver cancer tissue, IF : HepG2 cells,
Cited Applications: FC, IF, IHC, IP, WB	
Species Specificity: human	
Cited Species: human, mouse, zebrafish	

Note-IHC: suggested antigen retrieval with TE buffer pH 9.0; (*) Alternatively, antigen retrieval may be performed with citrate buffer pH 6.0

Background Information

Notable Publications

Author	Pubmed ID	Journal	Application
Shiao Tong	36248799	Front Immunol	WB,IHC,IF
Qianxing Zou	34825148	iScience	WB,IP,IF
Kai Ma	35637200	Cell Discov	IF

Storage

Storage:
Store at -20°C. Stable for one year after shipment.
Storage Buffer:
PBS with 0.02% sodium azide and 50% glycerol pH 7.3.
Aliquoting is unnecessary for -20°C storage

*** 20ul sizes contain 0.1% BSA

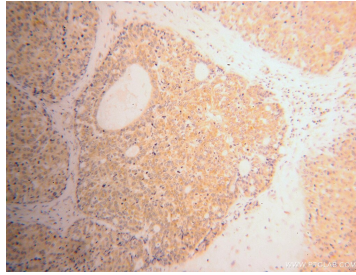
For technical support and original validation data for this product please contact:
T: 1 (888) 4PTGLAB (1-888-478-4522) (toll free in USA), or 1(312) 455-8498 (outside USA)
E: proteintech@ptglab.com
W: ptglab.com

This product is exclusively available under Proteintech Group brand and is not available to purchase from any other manufacturer.

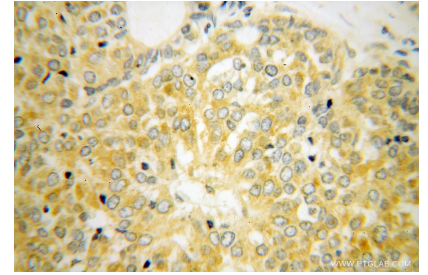
Selected Validation Data



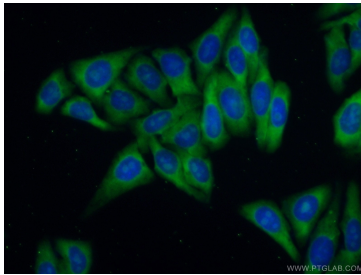
HepG2 cells were subjected to SDS PAGE followed by western blot with 14990-1-AP (RPL39 antibody) at dilution of 1:300 incubated at room temperature for 1.5 hours.



Immunohistochemical analysis of paraffin-embedded human liver cancer using 14990-1-AP (RPL39 antibody) at dilution of 1:100 (under 10x lens).



Immunohistochemical analysis of paraffin-embedded human liver cancer using 14990-1-AP (RPL39 antibody) at dilution of 1:100 (under 40x lens).



Immunofluorescent analysis of (10% Formaldehyde) fixed HepG2 cells using 14990-1-AP (RPL39 antibody) at dilution of 1:50 and Alexa Fluor 488-conjugated AffiniPure Goat Anti-Rabbit IgG(H+L).