

For Research Use Only

# RPS27A Polyclonal antibody

Catalog Number: 14946-1-AP **5 Publications**



## Basic Information

<b>Catalog Number:</b> 14946-1-AP	<b>GenBank Accession Number:</b> BC001392	<b>Purification Method:</b> Antigen affinity purification
<b>Size:</b> 150ul , Concentration: 400 µg/ml by Nanodrop and 293 µg/ml by Bradford method using BSA as the standard;	<b>GeneID (NCBI):</b> 6233	<b>Recommended Dilutions:</b> WB 1:200-1:1000 IHC 1:20-1:200
<b>Source:</b> Rabbit	<b>Full Name:</b> ribosomal protein S27a	
<b>Isotype:</b> IgG	<b>Calculated MW:</b> 18 kDa	
<b>Immunogen Catalog Number:</b> AG6750	<b>Observed MW:</b> 9 kDa, 18 kDa	

## Applications

<b>Tested Applications:</b> FC, IHC, WB, ELISA	<b>Positive Controls:</b> WB : mouse cerebellum tissue, Jurkat cells IHC : human endometrial cancer tissue, human cerebellum tissue
<b>Cited Applications:</b> FC, IF, WB	
<b>Species Specificity:</b> human, mouse	
<b>Cited Species:</b> human, mouse	
<b>Note-IHC: suggested antigen retrieval with TE buffer pH 9.0; (*) Alternatively, antigen retrieval may be performed with citrate buffer pH 6.0</b>	

## Background Information

RPS27A, also named as UBA80 and UBCEP1, can be cleaved into two chains Ubiquitin and 40S ribosomal protein S27a. Ubiquitin is a highly conserved 76-amino acid protein that plays a key role in protein degradation. Ubiquitin is synthesized as precursor proteins that consist either of polyubiquitin chains that are cleaved into moieties of the UBB or UBC types, or single ubiquitin moieties fused 5-prime to unrelated carboxyl extension proteins (UBA type) such as UBA52 and UBA80 (RPS27A) [PMID:10772958]

## Notable Publications

Author	Pubmed ID	Journal	Application
Ruochen Zhang	34966246	Mediators Inflamm	WB
Yuan Tian	24367661	PLoS One	WB
Weiguo Li	38099192	Front Chem	FC

## Storage

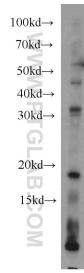
**Storage:**  
Store at -20°C. Stable for one year after shipment.  
**Storage Buffer:**  
PBS with 0.02% sodium azide and 50% glycerol pH 7.3.  
Aliquoting is unnecessary for -20°C storage

\*\*\* 20ul sizes contain 0.1% BSA

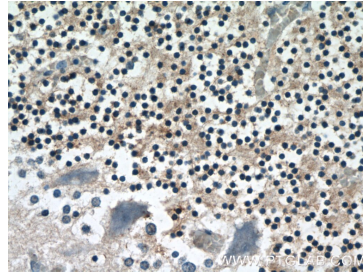
For technical support and original validation data for this product please contact:  
T: 1 (888) 4PTGLAB (1-888-478-4522) (toll free in USA), or 1(312) 455-8498 (outside USA)  
E: proteintech@ptglab.com  
W: ptglab.com

This product is exclusively available under Proteintech Group brand and is not available to purchase from any other manufacturer.

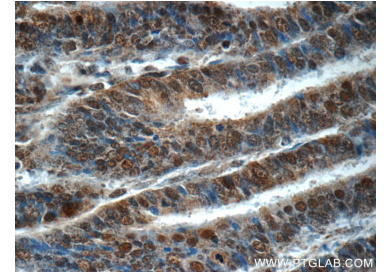
## Selected Validation Data



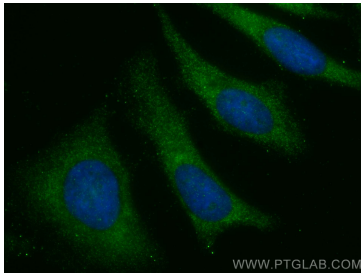
mouse cerebellum tissue were subjected to SDS PAGE followed by western blot with 14946-1-AP (RPS27A antibody) at dilution of 1:300 incubated at room temperature for 1.5 hours.



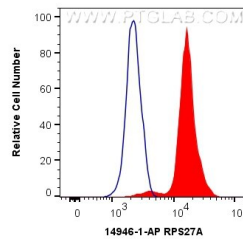
Immunohistochemical analysis of paraffin-embedded human cerebellum tissue slide using 14946-1-AP (RPS27A Antibody) at dilution of 1:50 (under 40x lens).



Immunohistochemical analysis of paraffin-embedded human endometrial cancer tissue slide using 14946-1-AP (RPS27A Antibody) at dilution of 1:50 (under 40x lens).



Immunofluorescent analysis of (-20°C Methanol) fixed HeLa cells using RPS27A antibody (14946-1-AP) at dilution of 1:200 and CoraLite®488-Conjugated AffiniPure Goat Anti-Rabbit IgG(H+L).



$1 \times 10^6$  HeLa cells were intracellularly stained with 0.4 ug Anti-Human RPS27A (14946-1-AP) and CoraLite®488-Conjugated AffiniPure Goat Anti-Rabbit IgG(H+L) at dilution 1:1000 (red), or 0.4 ug Isotype Control. Cells were fixed with 4% PFA and permeabilized with Flow Cytometry Perm Buffer (PF00011-C).