

For Research Use Only

RPS15A Polyclonal antibody

Catalog Number: 14942-1-AP



Basic Information

Catalog Number: 14942-1-AP	GenBank Accession Number: BC001697	Purification Method: Antigen affinity purification
Size: 150ul , Concentration: 270 µg/ml by Nanodrop and 280 µg/ml by Bradford method using BSA as the standard;	GeneID (NCBI): 6210	Recommended Dilutions: WB 1:500-1:1000 IHC 1:50-1:500
Source: Rabbit	Full Name: ribosomal protein S15a	
Isotype: IgG	Calculated MW: 15 kDa	
Immunogen Catalog Number: AG6655	Observed MW: 13-15 kDa	

Applications

Tested Applications: IHC, WB, ELISA	Positive Controls: WB : HeLa cells, HepG2 cells IHC : human kidney tissue,
Species Specificity: human	
Note-IHC: suggested antigen retrieval with TE buffer pH 9.0; (*) Alternatively, antigen retrieval may be performed with citrate buffer pH 6.0	

Background Information

RPS15A is a component of the small ribosomal subunit, it is required for proper erythropoiesis.

Storage

Storage:
Store at -20°C. Stable for one year after shipment.
Storage Buffer:
PBS with 0.02% sodium azide and 50% glycerol pH 7.3.
Aliquoting is unnecessary for -20°C storage

*** 20ul sizes contain 0.1% BSA

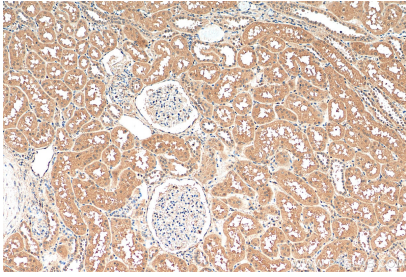
For technical support and original validation data for this product please contact:

T: 1 (888) 4PTGLAB (1-888-478-4522) (toll free in USA), or 1(312) 455-8498 (outside USA)

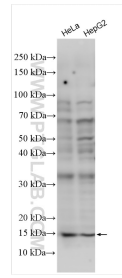
E: proteintech@ptglab.com
W: ptglab.com

This product is exclusively available under Proteintech Group brand and is not available to purchase from any other manufacturer.

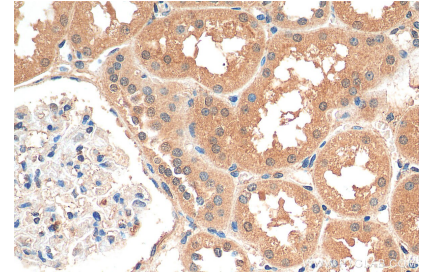
Selected Validation Data



Immunohistochemical analysis of paraffin-embedded human kidney tissue slide using 14942-1-AP (RPS15A antibody) at dilution of 1:50 (under 10x lens). Heat mediated antigen retrieval with Tris-EDTA buffer (pH 9.0).



Various lysates were subjected to SDS PAGE followed by western blot with 14942-1-AP (RPS15A antibody) at dilution of 1:500 incubated at room temperature for 1.5 hours.



Immunohistochemical analysis of paraffin-embedded human kidney tissue slide using 14942-1-AP (RPS15A antibody) at dilution of 1:50 (under 40x lens). Heat mediated antigen retrieval with Tris-EDTA buffer (pH 9.0).