

For Research Use Only

# SYK Polyclonal antibody

Catalog Number: 14858-1-AP

Featured Product

4 Publications



## Basic Information

<b>Catalog Number:</b> 14858-1-AP	<b>GenBank Accession Number:</b> BC001645	<b>Purification Method:</b> Antigen affinity purification
<b>Size:</b> 150ul, Concentration: 800 µg/ml by Nanodrop and 433 µg/ml by Bradford method using BSA as the standard;	<b>GeneID (NCBI):</b> 6850	<b>Recommended Dilutions:</b> WB 1:500-1:3000 IHC 1:400-1:1600
<b>Source:</b> Rabbit	<b>ENSEMBL Gene ID:</b> ENSG00000165025	
<b>Isotype:</b> IgG	<b>UNIPROT ID:</b> P43405	
<b>Immunogen Catalog Number:</b> AG6657	<b>Full Name:</b> spleen tyrosine kinase	
	<b>Calculated MW:</b> 72 kDa	
	<b>Observed MW:</b> 66-72 kDa	

## Applications

### Tested Applications:

WB, IHC, ELISA

### Cited Applications:

WB, IHC

### Species Specificity:

human, mouse, rat

### Cited Species:

human, mouse

**Note-IHC: suggested antigen retrieval with TE buffer pH 9.0; (\*) Alternatively, antigen retrieval may be performed with citrate buffer pH 6.0**

### Positive Controls:

WB: Daudi cells, Raji cells, Ramos cells

IHC: human liver cancer tissue, human appendicitis tissue, human spleen tissue, human kidney tissue, human ovary tissue

## Background Information

SYK belongs to the protein kinase superfamily, Tyr protein kinase family and SYK/ZAP-70 subfamily. It is positive effector of BCR-stimulated responses. SYK couples the B-cell antigen receptor (BCR) to the mobilization of calcium ion either through a phosphoinositide 3-kinase-dependent pathway, when not phosphorylated on tyrosines of the linker region, or through a phospholipase C-gamma-dependent pathway. It phosphorylates USP25 and regulates its intracellular levels. SYK also promotes liver fibrosis by activation of hepatic stellate cells and acts as a biomarker for human hepatocellular carcinoma. (PMID: 29537660) SYK can be detected 66-72 kDa in human and mouse (PMID: 37661351).

## Notable Publications

Author	Pubmed ID	Journal	Application
Le Pei	36359082	Animals (Basel)	WB
Quanwei Zhou	35910221	Front Genet	IHC
Jing Zhang	38320352	Int Immunopharmacol	WB

## Storage

### Storage:

Store at -20°C. Stable for one year after shipment.

### Storage Buffer:

PBS with 0.02% sodium azide and 50% glycerol pH 7.3.

Aliquoting is unnecessary for -20°C storage

\*\*\* 20ul sizes contain 0.1% BSA

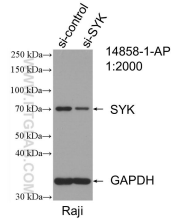
For technical support and original validation data for this product please contact:

T: 1 (888) 4PTGLAB (1-888-478-4522) (toll free in USA), or 1(312) 455-8498 (outside USA)

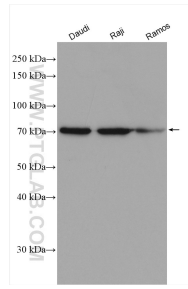
E: proteintech@ptglab.com  
W: ptglab.com

This product is exclusively available under Proteintech Group brand and is not available to purchase from any other manufacturer.

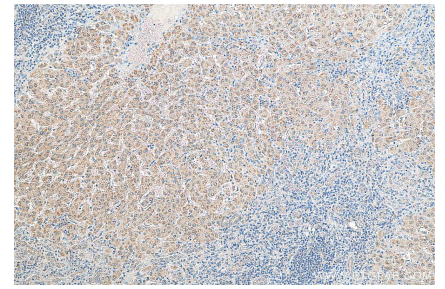
## Selected Validation Data



WB result of SYK antibody (14858-1-AP; 1:2000; incubated at room temperature for 1.5 hours) with sh-Control and sh-SYK transfected Raji cells.



Various lysates were subjected to SDS PAGE followed by western blot with 14858-1-AP (SYK antibody) at dilution of 1:1500 incubated at room temperature for 1.5 hours.



Immunohistochemical analysis of paraffin-embedded human liver cancer tissue slide using 14858-1-AP (SYK antibody) at dilution of 1:800 (under 10x lens). Heat mediated antigen retrieval with Tris-EDTA buffer (pH 9.0).