

For Research Use Only

RD3 Polyclonal antibody

Catalog Number: 14855-1-AP



Basic Information

Catalog Number: 14855-1-AP	GenBank Accession Number: BC065541	Purification Method: Antigen affinity purification
Size: 150ul , Concentration: 850 µg/ml by Nanodrop;	GeneID (NCBI): 343035	Recommended Dilutions: WB 1:500-1:3000 IHC 1:50-1:500
Source: Rabbit	Full Name: retinal degeneration 3	
Isotype: IgG	Calculated MW: 22.7 kDa	
Immunogen Catalog Number: AG6641	Observed MW: 23 kDa	

Applications

Tested Applications: WB, ELISA	Positive Controls:
Species Specificity: human, mouse, rat	WB : mouse retina tissue, rat retina tissue IHC : rat eye tissue,

Note-IHC: suggested antigen retrieval with TE buffer pH 9.0; (*) Alternatively, antigen retrieval may be performed with citrate buffer pH 6.0

Background Information

RD3, also named as C1orf36, is a part of subnuclear protein complexes involved in diverse processes, such as transcription and splicing. It is associated with Retinal Degeneration.

Storage

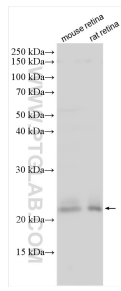
Storage:
Store at -20°C. Stable for one year after shipment.
Storage Buffer:
PBS with 0.02% sodium azide and 50% glycerol pH 7.3.
Aliquoting is unnecessary for -20°C storage

*** 20ul sizes contain 0.1% BSA

For technical support and original validation data for this product please contact:
T: 1 (888) 4PTGLAB (1-888-478-4522) (toll free in USA), or 1(312) 455-8498 (outside USA)
E: proteintech@ptglab.com
W: ptglab.com

This product is exclusively available under Proteintech Group brand and is not available to purchase from any other manufacturer.

Selected Validation Data



Various lysates were subjected to SDS PAGE followed by western blot with 14855-1-AP (RD3 antibody) at dilution of 1:1500 incubated at room temperature for 1.5 hours.